

RPS10P5 Antibody



PACO54570

Product Information

Size:

50ug

Reactivity:

Human

Source:

Rabbit

Isotype:

IgG

Applications:

ELISA, WB, IP

Recommended dilutions:

ELISA:1:2000-1:10000, WB:1:500-1:5000,
IP:1:200-1:2000

Protein Background:

cytosolic small ribosomal subunit, structural constituent of ribosome, ribosomal small subunit assembly.

Gene ID:

RPS10P5

Uniprot

Q9NQ39

Synonyms:

Putative 40S ribosomal protein S10-like, RPS10P5, RPS10L

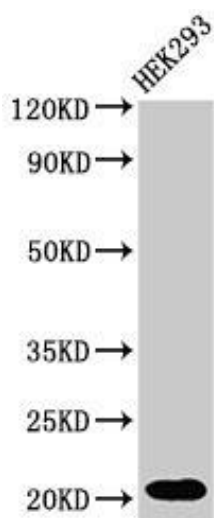
Immunogen:

Recombinant Human Putative 40S ribosomal protein S10-like protein (1-176A).

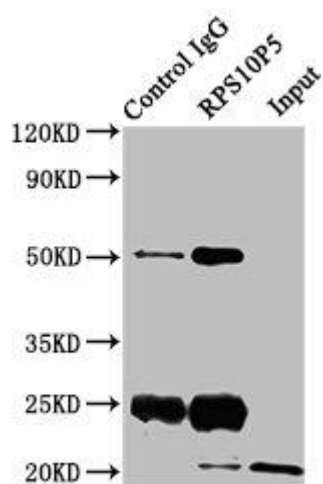
Storage:

Preservative: 0.03% Proclin 300. Constituents: 50% Glycerol, 0.01M PBS, pH 7.4

Product Images



Western Blot. Positive WB detected in: HEK293 whole cell lysate. All lanes: RPS10P5 antibody at 2 μ g/ml. Secondary. Goat polyclonal to rabbit IgG at 1/50000 dilution. Predicted band size: 21 kDa. Observed band size: 21 kDa.



Immunoprecipitating RPS10P5 in HEK293 whole cell lysate. Lane 1: Rabbit control IgG instead of PACO54570 in HEK293 whole cell lysate. For western blotting, a HRP-conjugated Protein G antibody was used as the secondary antibody (1/2000). Lane 2: PACO54570 (8 μ g) + HEK293 whole cell lysate (500 μ g). Lane 3: HEK293 whole cell lysate (10 μ g).