

RAET1E Antibody



PACO54550

Product Information

Size:

50ug

Reactivity:

Human

Source:

Rabbit

Isotype:

IgG

Applications:

ELISA, IHC, IF

Recommended dilutions:

ELISA:1:2000-1:10000, IHC:1:20-1:200,
IF:1:200-1:500

Protein Background:

Gene ID:

RAET1E

Uniprot

Q3ZAR2

Synonyms:

Retinoic acid, early-inducible protein 1-epsilon (RAE-1-epsilon), Raet1e

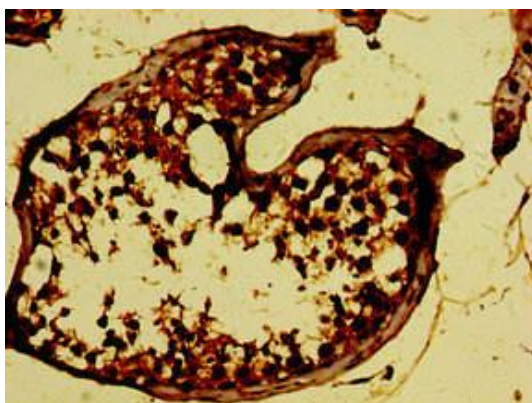
Immunogen:

Recombinant Human Retinoic acid, early transcript 1E protein (31-225AA).

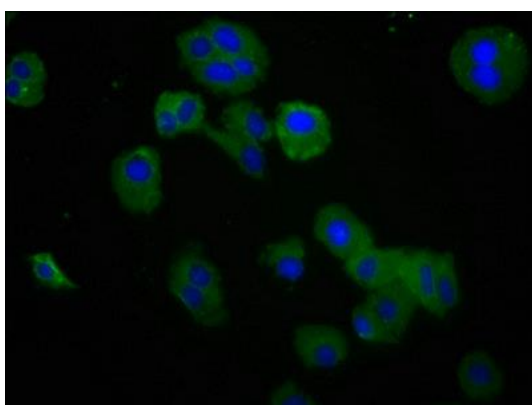
Storage:

Preservative: 0.03% Proclin 300. Constituents: 50% Glycerol, 0.01M PBS, pH 7.4

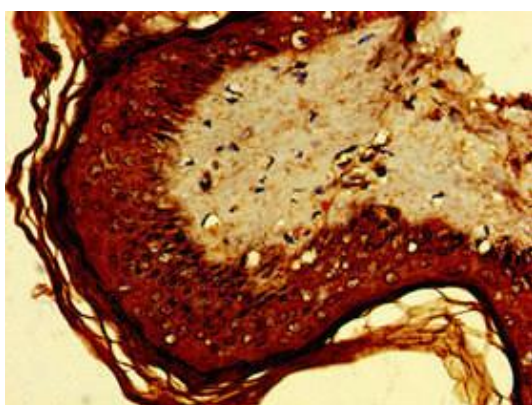
Product Images



Immunohistochemistry of paraffin-embedded human testis tissue using PACO54550 at dilution of 1:100.



Immunofluorescence staining of HepG2 cells with PACO54550 at 1:200, counter-stained with DAPI. The cells were fixed in 4% formaldehyde, permeabilized using 0.2% Triton X-100 and blocked in 10% normal Goat Serum. The cells were then incubated with the antibody overnight at 4°C. The secondary antibody was Alexa Fluor 488-conjugated AffiniPure Goat Anti-Rabbit IgG(H+L).



Immunohistochemistry of paraffin-embedded human skin tissue using PACO54550 at dilution of 1:100.