

SORCS1 Antibody



PACO54542

Product Information

Size:

50ug

Reactivity:

Human

Source:

Rabbit

Isotype:

IgG

Applications:

ELISA, WB, IHC, IF

Recommended dilutions:

ELISA:1:2000-1:10000, WB:1:500-1:5000,
IHC:1:20-1:200, IF:1:50-1:200

Protein Background:

membrane, neuropeptide receptor activity, neuropeptide signaling pathway.

Gene ID:

SORCS1

Uniprot

Q8WY21

Synonyms:

VPS10 domain-containing receptor SorCS1 (hSorCS), SORCS1, SORCS

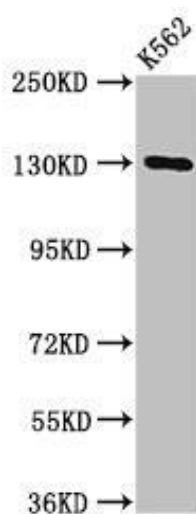
Immunogen:

Recombinant Human VPS10 domain-containing receptor SorCS1 protein (34-175AA).

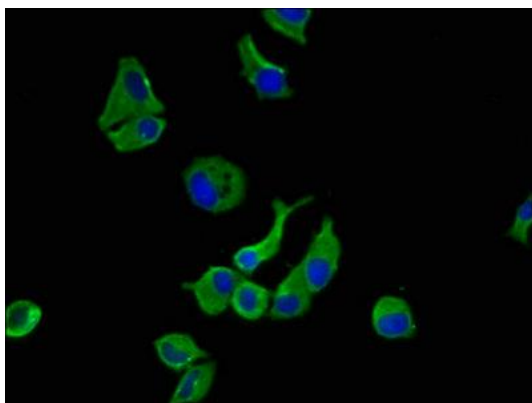
Storage:

Preservative: 0.03% Proclin 300. Constituents: 50% Glycerol, 0.01M PBS, pH 7.4

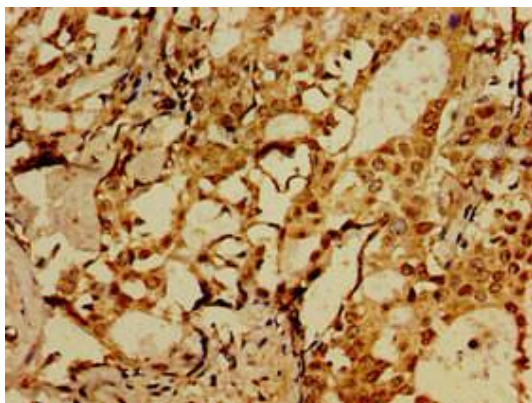
Product Images



Western Blot. Positive WB detected in: K562 whole cell lysate. All lanes: SORCS1 antibody at 3 μ g/ml. Secondary. Goat polyclonal to rabbit IgG at 1/50000 dilution. Predicted band size: 130, 134, 132 kDa. Observed band size: 130 kDa.



Immunofluorescence staining of MCF-7 cells with PACO54542 at 1:100, counter-stained with DAPI. The cells were fixed in 4% formaldehyde, permeabilized using 0.2% Triton X-100 and blocked in 10% normal Goat Serum. The cells were then incubated with the antibody overnight at 4°C. The secondary antibody was Alexa Fluor 488-conjugated AffiniPure Goat Anti-Rabbit IgG(H+L).



Immunohistochemistry of paraffin-embedded human breast cancer using PACO54542 at dilution of 1:100.