

PACO54490

Product Information

Size:

50ug

Reactivity:

Human, Mouse, Rat

Source:

Rabbit

Isotype:

IgG

Applications:

ELISA, WB, IHC, IF

Recommended dilutions:

ELISA:1:2000-1:10000, WB:1:500-1:5000,
IHC:1:20-1:200, IF:1:50-1:200

Protein Background:

Gluconolactonase with low activity towards other sugar lactones, including gulonolactone and galactonolactone. Can also hydrolyze diisopropyl phosphorofluoridate and phenylacetate (in vitro). Calcium-binding protein. Modulates Ca(2+) signaling, and Ca(2+)-dependent cellular processes and enzyme activities.

Gene ID:

RGN

Uniprot

Q15493

Synonyms:

Regucalcin (RC) (Gluconolactonase) (GNL) (EC 3.1.1.17) (Senescence marker protein 30) (SMP-30), RGN, SMP30

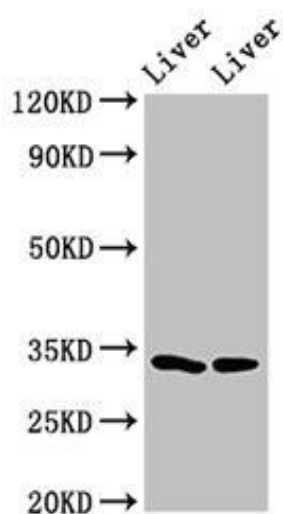
Immunogen:

Recombinant Human Regucalcin protein (1-299AA).

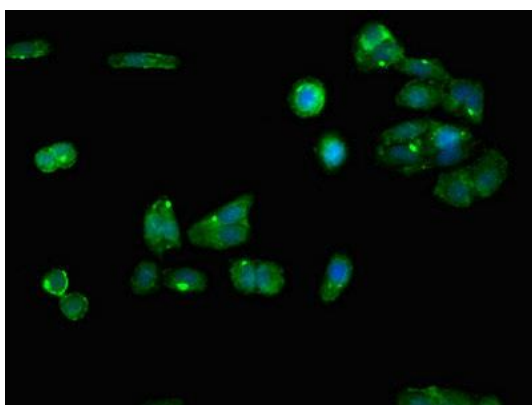
Storage:

Preservative: 0.03% Proclin 300. Constituents: 50% Glycerol, 0.01M PBS, pH 7.4

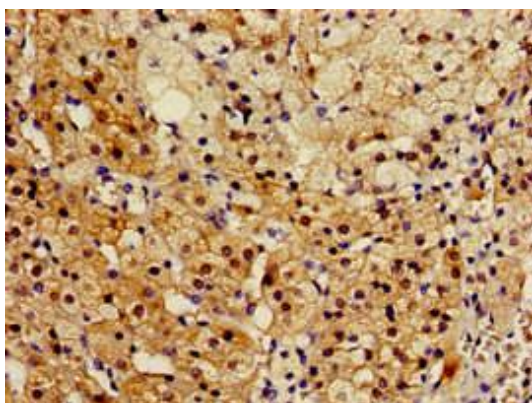
Product Images



Western Blot. Positive WB detected in: Rat liver tissue, Mouse liver tissue. All lanes: RGN antibody at 3 μ g/ml. Secondary. Goat polyclonal to rabbit IgG at 1/50000 dilution. Predicted band size: 34, 25 kDa. Observed band size: 34 kDa.



Immunofluorescent analysis of HepG2 cells using PACO54490 at dilution of 1:100 and Alexa Fluor 488-conjugated AffiniPure Goat Anti-Rabbit IgG(H+L).



Immunohistochemistry of paraffin-embedded human adrenal gland tissue using PACO54490 at dilution of 1:100.