

PKD2 Antibody



PACO54482

Product Information

Size:

50ug

Reactivity:

Human

Source:

Rabbit

Isotype:

IgG

Applications:

ELISA, IHC, IF

Recommended dilutions:

ELISA:1:2000-1:10000, IHC:1:20-1:200,
IF:1:50-1:200

Protein Background:

Gene ID:

PKD2

Uniprot

Q13563

Synonyms:

Polycystin-2 (PC2) (Autosomal dominant polycystic kidney disease type II protein) (Polycystic kidney disease 2 protein) (Polycystin) (R48321) (Transient receptor potential cation channel subfamily P member 2), PKD2, TRPP2

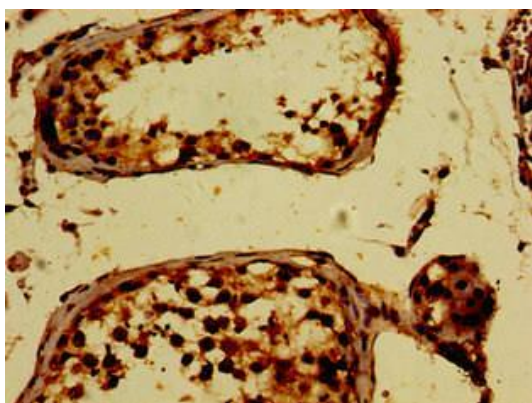
Immunogen:

Recombinant Human Polycystin-2 protein (680-968AA).

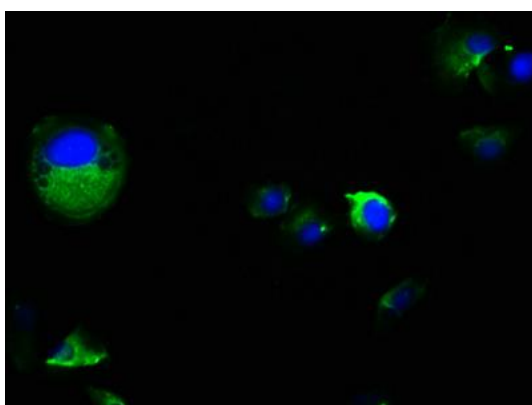
Storage:

Preservative: 0.03% Proclin 300. Constituents: 50% Glycerol, 0.01M PBS, pH 7.4

Product Images



Immunohistochemistry of paraffin-embedded human testis tissue using PACO54482 at dilution of 1:100.



Immunofluorescence staining of MCF-7 cells with PACO54482 at 1:100, counter-stained with DAPI. The cells were fixed in 4% formaldehyde, permeabilized using 0.2% Triton X-100 and blocked in 10% normal Goat Serum. The cells were then incubated with the antibody overnight at 4°C. The secondary antibody was Alexa Fluor 488-conjugated AffiniPure Goat Anti-Rabbit IgG(H+L).