

PACO54318

---

## Product Information

**Size:**

50ug

**Reactivity:**

Human

**Source:**

Rabbit

**Isotype:**

IgG

**Applications:**

ELISA, WB, IHC, IF

**Recommended dilutions:**

ELISA:1:2000-1:10000, WB:1:500-1:5000,  
IHC:1:20-1:200, IF:1:50-1:200

**Protein Background:**

Probable cytoskeleton-associated protease required for normal muscle growth. Involved in function, maturation and stabilization of the neuromuscular junction. May act by cleaving muscle-specific proteins such as FLNC.

**Gene ID:**

KY

**Uniprot**

Q8NBH2

**Synonyms:**

Kyphoscoliosis peptidase (EC 3.4), KY

**Immunogen:**

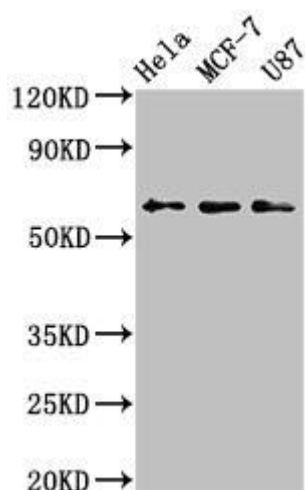
Recombinant Human Kyphoscoliosis peptidase protein (23-170AA).

**Storage:**

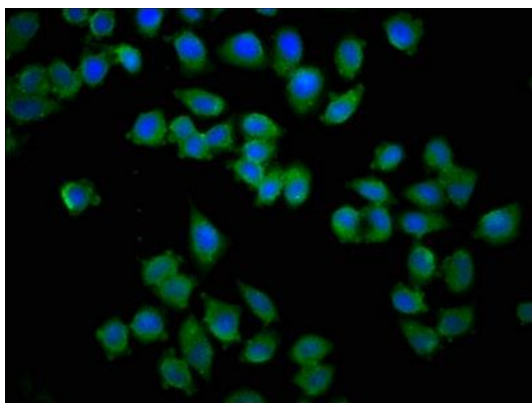
Preservative: 0.03% Proclin 300. Constituents: 50% Glycerol, 0.01M PBS, pH 7.4

## Product Images

---



Western Blot. Positive WB detected in: HeLa whole cell lysate, MCF-7 whole cell lysate, U87 whole cell lysate. All lanes: KY antibody at 3.2 $\mu$ g/ml. Secondary. Goat polyclonal to rabbit IgG at 1/50000 dilution. Predicted band size: 64, 42, 73, 76 kDa. Observed band size: 64 kDa.



Immunofluorescence staining of HeLa cells with PACO54318 at 1:133, counter-stained with DAPI. The cells were fixed in 4% formaldehyde, permeabilized using 0.2% Triton X-100 and blocked in 10% normal Goat Serum. The cells were then incubated with the antibody overnight at 4°C. The secondary antibody was Alexa Fluor 488-conjugated AffiniPure Goat Anti-Rabbit IgG(H+L).



Immunohistochemistry of paraffin-embedded human skeletal muscle tissue using PACO54318 at dilution of 1:100.