

PACO54266

Product Information

Size:

50ug

Reactivity:

Human

Source:

Rabbit

Isotype:

IgG

Applications:

ELISA, IHC, IF

Recommended dilutions:

ELISA:1:2000-1:10000, IHC:1:20-1:200,
IF:1:50-1:200

Protein Background:

High affinity receptor for interleukin-3, interleukin-5 and granulocyte-macrophage colony-stimulating factor.

Gene ID:

CSF2RB

Uniprot

P32927

Synonyms:

Cytokine receptor common subunit beta (CDw131) (GM-CSF/IL-3/IL-5 receptor common beta subunit) (CD antigen CD131), CSF2RB, IL3RB IL5RB

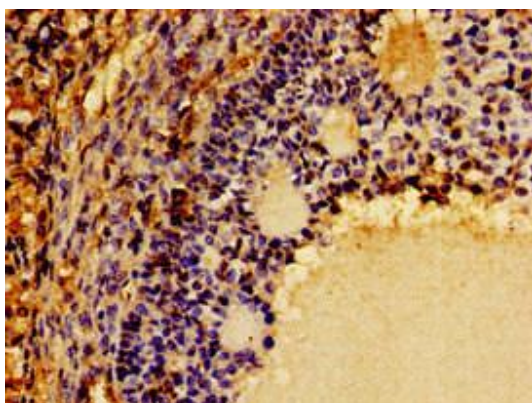
Immunogen:

Recombinant Human Cytokine receptor common subunit β protein (492-710AA).

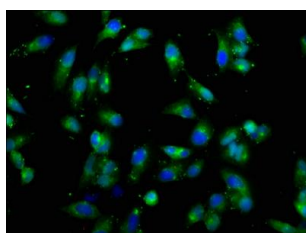
Storage:

Preservative: 0.03% Proclin 300. Constituents: 50% Glycerol, 0.01M PBS, pH 7.4

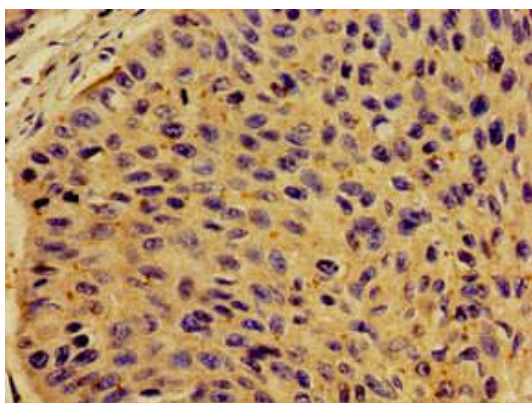
Product Images



Immunohistochemistry of paraffin-embedded human ovarian cancer using PACO54266 at dilution of 1:100.



Immunofluorescence staining of HeLa cells with PACO54266 at 1:66, counter-stained with DAPI. The cells were fixed in 4% formaldehyde, permeabilized using 0.2% Triton X-100 and blocked in 10% normal Goat Serum. The cells were then incubated with the antibody overnight at 4°C. The secondary antibody was Alexa Fluor 488-conjugated AffiniPure Goat Anti-Rabbit IgG(H+L).



Immunohistochemistry of paraffin-embedded human cervical cancer using PACO54266 at dilution of 1:100.