

POLE Antibody



PACO54226

Product Information

Size:

50ug

Reactivity:

Human

Source:

Rabbit

Isotype:

IgG

Applications:

ELISA, IHC, IF

Recommended dilutions:

ELISA:1:2000-1:10000, IHC:1:20-1:200,
IF:1:50-1:200

Protein Background:

Participates in DNA repair and in chromosomal DNA replication.

Gene ID:

POLE

Uniprot

Q07864

Synonyms:

DNA polymerase epsilon catalytic subunit A (EC 2.7.7.7) (DNA polymerase II subunit A),
POLE, POLE1

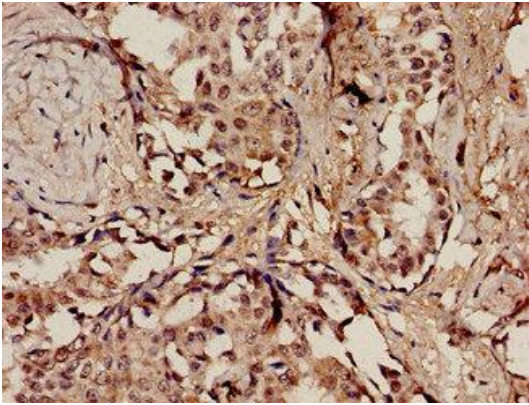
Immunogen:

Recombinant Human DNA polymerase epsilon catalytic subunit A protein (1175-
1311AA).

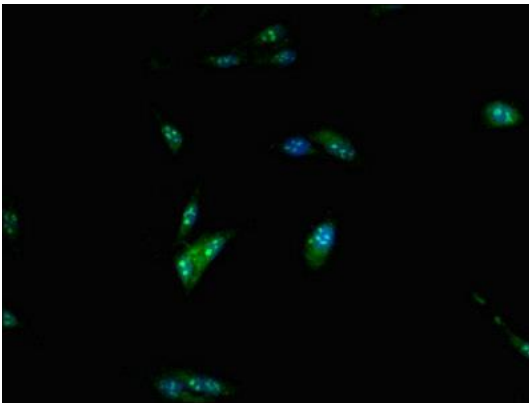
Storage:

Preservative: 0.03% Proclin 300. Constituents: 50% Glycerol, 0.01M PBS, pH 7.4

Product Images



Immunohistochemistry analysis of human breast cancer using PACO54226 at dilution of 1:100.



Immunofluorescent analysis of HeLa cells using PACO54226 at dilution of 1:100 and Alexa Fluor 488-conjugated AffiniPure Goat Anti-Rabbit IgG(H+L).