

PSORS1C1 Antibody



PACO54214

Product Information

Size:

50ug

Reactivity:

Human

Source:

Rabbit

Isotype:

IgG

Applications:

ELISA, IHC

Recommended dilutions:

ELISA:1:2000-1:10000, IHC:1:20-1:200

Protein Background:**Gene ID:**

PSORS1C1

Uniprot

Q9UIG5

Synonyms:

Psoriasis susceptibility 1 candidate gene 1 protein (Protein SEEK1), PSORS1C1, C6orf16
SEEK1

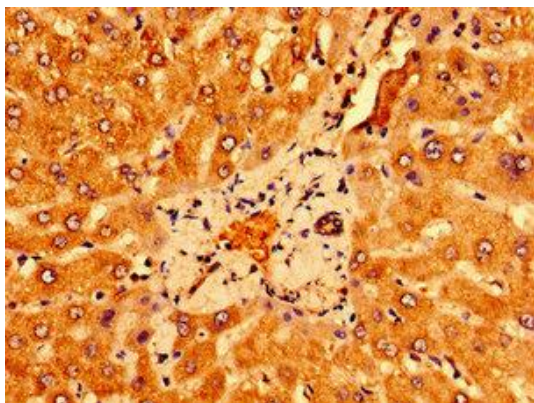
Immunogen:

Recombinant Human Psoriasis susceptibility 1 candidate gene 1 protein (1-152AA).

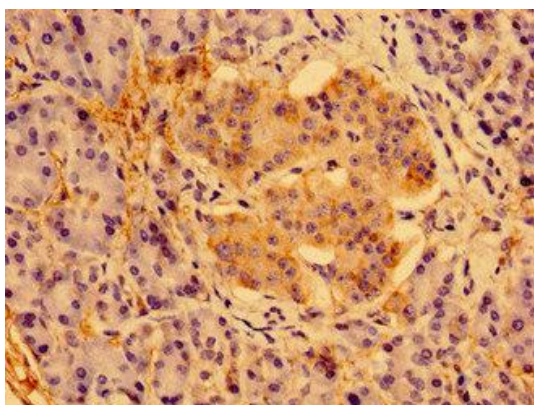
Storage:

Preservative: 0.03% Proclin 300. Constituents: 50% Glycerol, 0.01M PBS, pH 7.4

Product Images



Immunohistochemistry of paraffin-embedded human liver tissue using PACO54214 at dilution of 1:100.



Immunohistochemistry of paraffin-embedded human pancreatic tissue using PACO54214 at dilution of 1:100.