

PACO54170

Product Information

Size:

50ug

Reactivity:

Human

Source:

Rabbit

Isotype:

IgG

Applications:

ELISA, WB, IHC

Recommended dilutions:

ELISA:1:2000-1:10000, WB:1:500-1:5000,
IHC:1:20-1:200

Protein Background:

Gene ID:

MCU

Uniprot

Q8NE86

Synonyms:

Calcium uniporter protein, mitochondrial (HsMCU) (Coiled-coil domain-containing protein 109A), MCU, C10orf42 CCDC109A

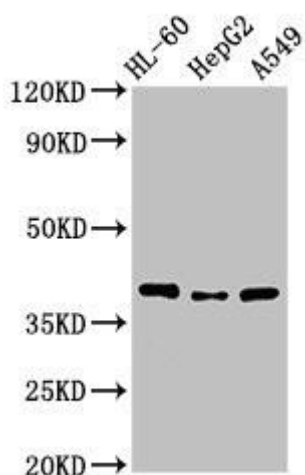
Immunogen:

Recombinant Human Calcium uniporter protein, mitochondrial protein (155-233AA).

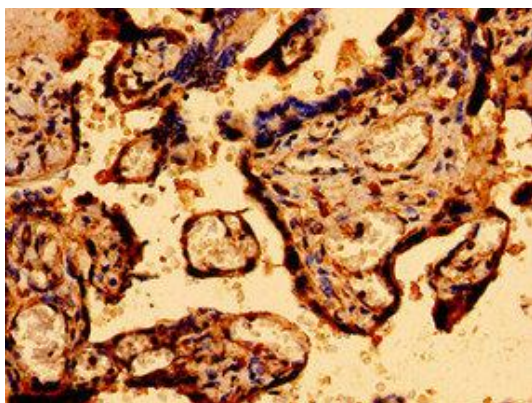
Storage:

Preservative: 0.03% Proclin 300. Constituents: 50% Glycerol, 0.01M PBS, pH 7.4

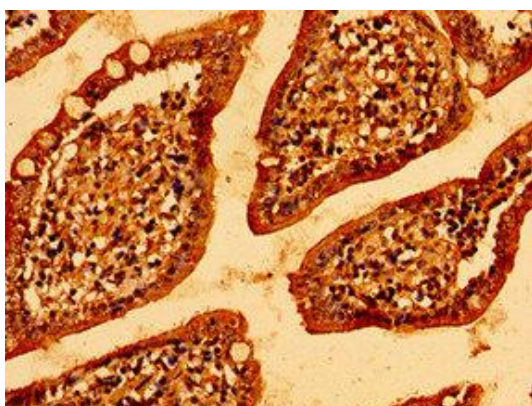
Product Images



Western Blot. Positive WB detected in: HL60 whole cell lysate, HepG2 whole cell lysate, A549 whole cell lysate. All lanes: MCU antibody at 3.4 μ g/ml. Secondary. Goat polyclonal to rabbit IgG at 1/50000 dilution. Predicted band size: 40, 37, 36 kDa. Observed band size: 40 kDa.



Immunohistochemistry of paraffin-embedded human placenta tissue using PACO54170 at dilution of 1:100.



Immunohistochemistry of paraffin-embedded human small intestine tissue using PACO54170 at dilution of 1:100.