

ORAI1 Antibody



PACO54166

Product Information

Size:

50ug

Reactivity:

Human, Mouse

Source:

Rabbit

Isotype:

IgG

Applications:

ELISA, WB, IHC

Recommended dilutions:

ELISA:1:2000-1:10000, WB:1:500-1:5000,
IHC:1:20-1:200

Protein Background:

Ca(2+) release-activated Ca(2+) (CRAC) channel subunit which mediates Ca(2+) influx following depletion of intracellular Ca(2+) stores and channel activation by the Ca(2+) sensor, STIM1. CRAC channels are the main pathway for Ca(2+) influx in T-cells and promote the immune response to pathogens by activating the transcription factor NFAT.

Gene ID:

ORAI1

Uniprot

Q96D31

Synonyms:

Calcium release-activated calcium channel protein 1 (Protein orai-1) (Transmembrane protein 142A), ORAI1, CRACM1 TMEM142A

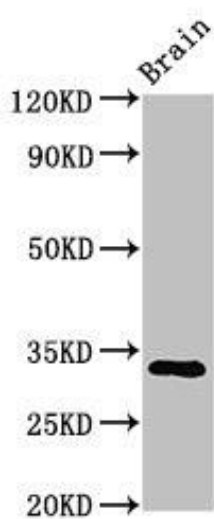
Immunogen:

Recombinant Human Calcium release-activated calcium channel protein 1 protein (1-87AA).

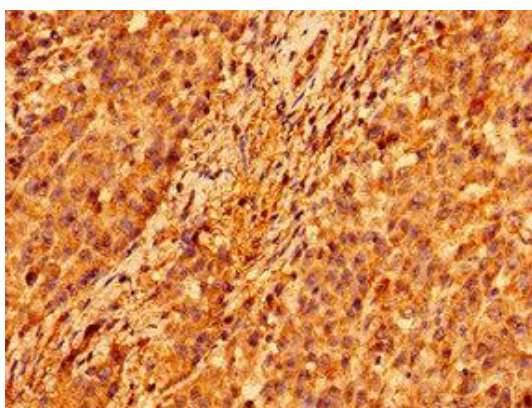
Storage:

Preservative: 0.03% Proclin 300. Constituents: 50% Glycerol, 0.01M PBS, pH 7.4

Product Images



Western Blot. Positive WB detected in: Mouse brain tissue. All lanes: ORAI1 antibody at 3.2 μ g/ml. Secondary. Goat polyclonal to rabbit IgG at 1/50000 dilution. Predicted band size: 33, 26 kDa. Observed band size: 33 kDa.



Immunohistochemistry of paraffin-embedded human colon cancer using PACO54166 at dilution of 1:100.