

PACO54146

Product Information

Size:

50ug

Reactivity:

Human, Rat

Source:

Rabbit

Isotype:

IgG

Applications:

ELISA, WB, IHC

Recommended dilutions:

ELISA:1:2000-1:10000, WB:1:500-1:5000,
IHC:1:20-1:200

Protein Background:

Acts as a co-chaperone in iron-sulfur cluster assembly in mitochondria.

Gene ID:

HSCB

Uniprot

Q8IWL3

Synonyms:

Iron-sulfur cluster co-chaperone protein HscB, mitochondrial (DnaJ homolog subfamily C member 20) (Hsc20), HSCB, DNAJC20 HSC20

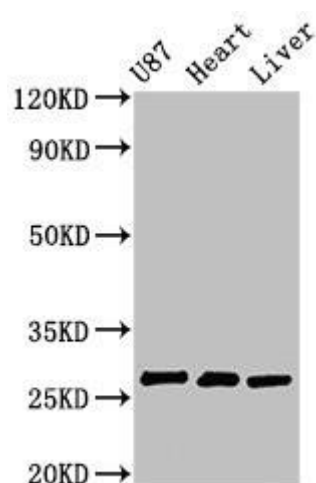
Immunogen:

Recombinant Human Iron-sulfur cluster co-chaperone protein HscB, mitochondrial protein (30-235AA).

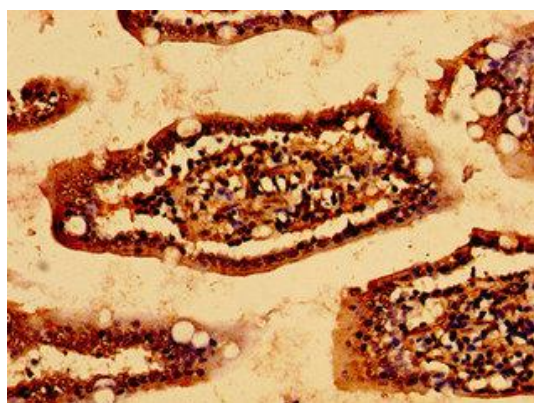
Storage:

Preservative: 0.03% Proclin 300. Constituents: 50% Glycerol, 0.01M PBS, pH 7.4

Product Images



Western Blot. Positive WB detected in: U87 whole cell lysate, Rat heart tissue, Rat liver tissue. All lanes: HSCB antibody at 2.7 μ g/ml. Secondary. Goat polyclonal to rabbit IgG at 1/50000 dilution. Predicted band size: 28 kDa. Observed band size: 28 kDa.



Immunohistochemistry of paraffin-embedded human small intestine tissue using PACO54146 at dilution of 1:100.