

PACO54138

---

## Product Information

**Size:**

50ug

**Reactivity:**

Human

**Source:**

Rabbit

**Isotype:**

IgG

**Applications:**

ELISA, IHC, IF

**Recommended dilutions:**

ELISA:1:2000-1:10000, IHC:1:20-1:200,  
IF:1:50-1:200

**Protein Background:**

Probable role in mitotic spindle regulation and coordination of mitotic processes. May have a preferential role in regulating neurogenesis.

**Gene ID:**

ASPM

**Uniprot**

Q8IZT6

**Synonyms:**

Abnormal spindle-like microcephaly-associated protein (Abnormal spindle protein homolog) (Asp homolog), ASPM, MCPH5

**Immunogen:**

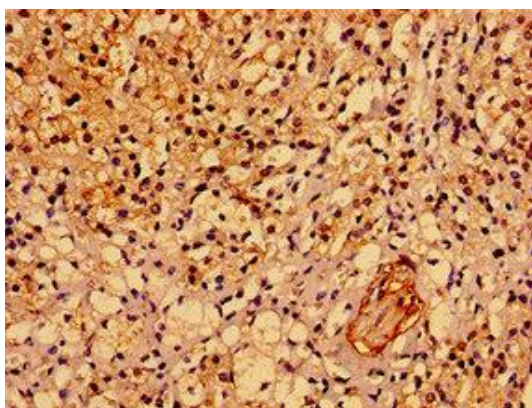
Recombinant Human Abnormal spindle-like microcephaly-associated protein (101-234AA).

**Storage:**

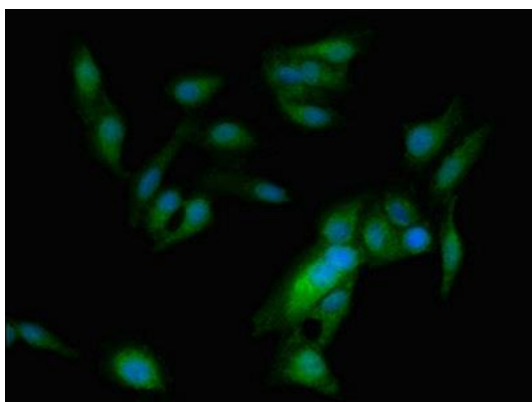
Preservative: 0.03% Proclin 300. Constituents: 50% Glycerol, 0.01M PBS, pH 7.4

## Product Images

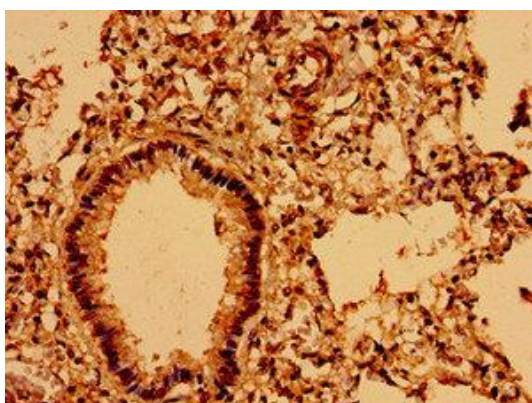
---



Immunohistochemistry of paraffin-embedded human adrenal gland tissue using PACO54138 at dilution of 1:100.



Immunofluorescent analysis of HeLa cells using PACO54138 at dilution of 1:100 and Alexa Fluor 488-conjugated AffiniPure Goat Anti-Rabbit IgG(H+L).



Immunohistochemistry of paraffin-embedded human lung tissue using PACO54138 at dilution of 1:100.