

# SHE Antibody



PACO54126

---

## Product Information

**Size:**

50ug

**Reactivity:**

Human, Mouse, Rat

**Source:**

Rabbit

**Isotype:**

IgG

**Applications:**

ELISA, WB, IHC

**Recommended dilutions:**

ELISA:1:2000-1:10000, WB:1:500-1:5000,  
IHC:1:20-1:200

**Protein Background:**

SH3/SH2 adaptor activity, signal transduction.

**Gene ID:**

SHE

**Uniprot**

Q5VZ18

**Synonyms:**

SH2 domain-containing adapter protein E, SHE

**Immunogen:**

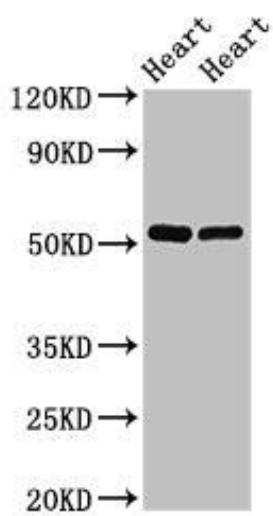
Recombinant Human SH2 domain-containing adapter protein E protein (2-162AA).

**Storage:**

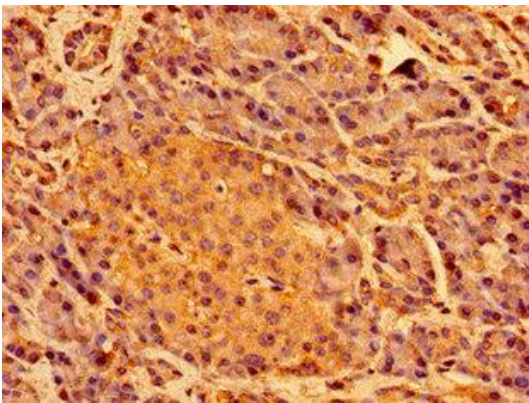
Preservative: 0.03% Proclin 300. Constituents: 50% Glycerol, 0.01M PBS, pH 7.4

## Product Images

---



Western Blot. Positive WB detected in: Rat heart tissue, Mouse heart tissue. All lanes: SHE antibody at 2.5 $\mu$ g/ml. Secondary. Goat polyclonal to rabbit IgG at 1/50000 dilution. Predicted band size: 54 kDa. Observed band size: 54 kDa.



Immunohistochemistry of paraffin-embedded human pancreatic tissue using PACO54126 at dilution of 1:100.