

PACO54106

Product Information

Size:

50ug

Reactivity:

Human

Source:

Rabbit

Isotype:

IgG

Applications:

ELISA, IHC, IF

Recommended dilutions:

ELISA:1:2000-1:10000, IHC:1:20-1:200,
IF:1:50-1:200

Protein Background:

Probable effector of the planar cell polarity signaling pathway which regulates the septin cytoskeleton in both ciliogenesis and collective cell movements. Together with FUZ and WDPCP proposed to function as core component of the CPLANE (ciliogenesis and planar polarity effectors) complex involved in the recruitment of peripheral IFT-A proteins to basal bodies.

Gene ID:

WDPCP

Uniprot

O95876

Synonyms:

WD repeat-containing and planar cell polarity effector protein fritz homolog (hFRTZ) (Bardet-Biedl syndrome 15 protein) (WD repeat-containing and planar cell polarity effector protein), WDPCP, BBS15 C2orf86 FRITZ

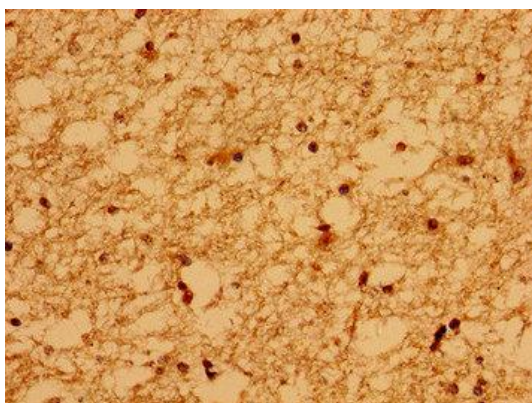
Immunogen:

Recombinant Human WD repeat-containing and planar cell polarity effector protein fritz homolog protein (621-737AA).

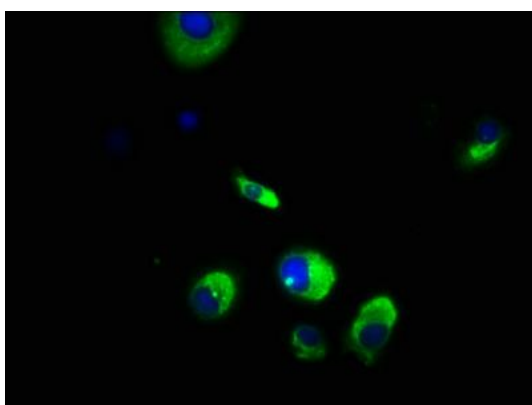
Storage:

Preservative: 0.03% Proclin 300. Constituents: 50% Glycerol, 0.01M PBS, pH 7.4

Product Images



Immunohistochemistry of paraffin-embedded human brain tissue using PACO54106 at dilution of 1:100.



Immunofluorescence staining of MCF-7 cells with PACO54106 at 1:166, counter-stained with DAPI. The cells were fixed in 4% formaldehyde, permeabilized using 0.2% Triton X-100 and blocked in 10% normal Goat Serum. The cells were then incubated with the antibody overnight at 4°C. The secondary antibody was Alexa Fluor 488-conjugated AffiniPure Goat Anti-Rabbit IgG(H+L).