

PACO53998

Product Information

Size:

50ug

Reactivity:

Human

Source:

Rabbit

Isotype:

IgG

Applications:

ELISA, IHC

Recommended dilutions:

ELISA:1:2000-1:10000, IHC:1:20-1:200

Protein Background:

Probable transcription factor that binds to the DNA sequence 5'-GC[TA][AC]ATTA[GA]-3'. Activates the transcription of the GHRH gene. Plays an important role in pituitary development.

Gene ID:

GSX1

Uniprot

Q9H4S2

Synonyms:

GS homeobox 1 (Homeobox protein GSH-1), GSX1, GSH1

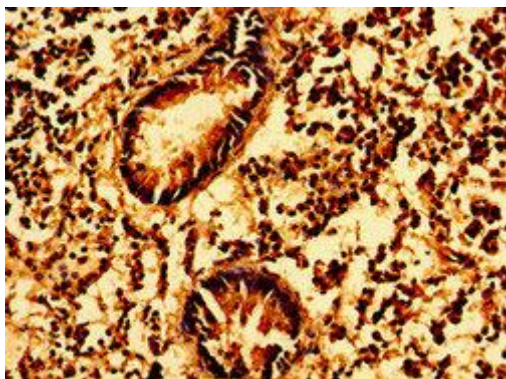
Immunogen:

Recombinant Human GS homeobox 1 protein (67-147AA).

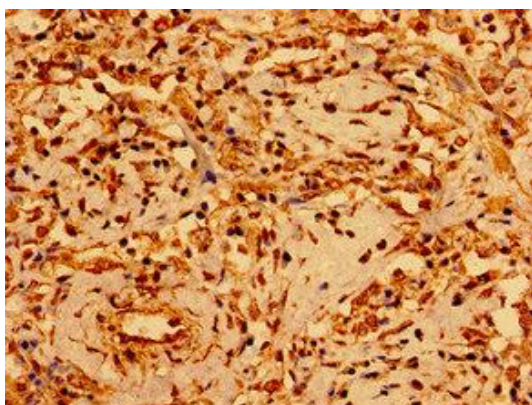
Storage:

Preservative: 0.03% Proclin 300. Constituents: 50% Glycerol, 0.01M PBS, pH 7.4

Product Images



Immunohistochemistry of paraffin-embedded human appendix tissue using PACO53998 at dilution of 1:100.



Immunohistochemistry of paraffin-embedded human lung cancer using PACO53998 at dilution of 1:100.