

PACO53934

---

## Product Information

**Size:**

50ug

**Reactivity:**

Human, Mouse

**Source:**

Rabbit

**Isotype:**

IgG

**Applications:**

ELISA, WB, IHC, IF

**Recommended dilutions:**

ELISA:1:2000-1:10000, WB:1:500-1:5000,  
IHC:1:20-1:200, IF:1:50-1:200

**Protein Background:**

Protease that catalyzes two essential functions in the SUMO pathway: processing of full-length SUMO1, SUMO2 and SUMO3 to their mature forms and deconjugation of SUMO1, SUMO2 and SUMO3 from targeted proteins. May down-regulate CTNNB1 levels and thereby modulate the Wnt pathway. Deconjugates SUMO2 from MTA1. Plays a dynamic role in adipogenesis by desumoylating and promoting the stabilization of CEBPB.

**Gene ID:**

SENP2

**Uniprot**

Q9HC62

**Synonyms:**

Sentrin-specific protease 2 (EC 3.4.22) (Axam2) (SMT3-specific isopeptidase 2) (Smt3ip2) (Sentrin/SUMO-specific protease SENP2), SENP2, KIAA1331

**Immunogen:**

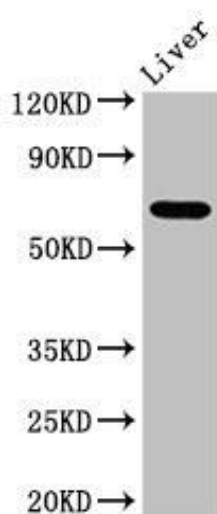
Recombinant Human Sentrin-specific protease 2 protein (138-324AA).

**Storage:**

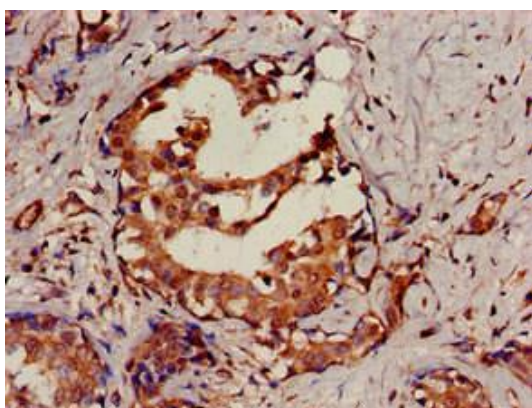
Preservative: 0.03% Proclin 300. Constituents: 50% Glycerol, 0.01M PBS, pH 7.4

## Product Images

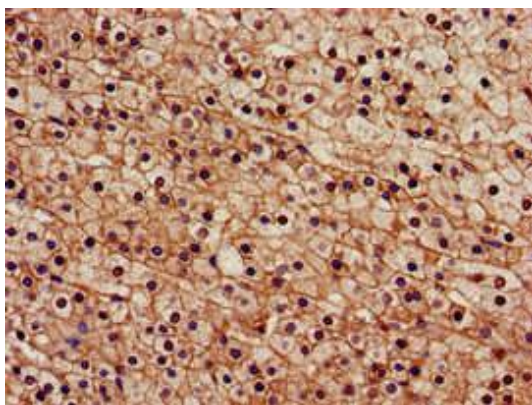
---



Western Blot. Positive WB detected in: Mouse liver tissue. All lanes: SENP2 antibody at 3.4 $\mu$ g/ml. Secondary. Goat polyclonal to rabbit IgG at 1/50000 dilution. Predicted band size: 68, 67 kDa. Observed band size: 68 kDa.



Immunohistochemistry of paraffin-embedded human breast cancer using PACO53934 at dilution of 1:100.



Immunohistochemistry of paraffin-embedded human adrenal gland tissue using PACO53934 at dilution of 1:100.