

TSR1 Antibody



PACO53858

Product Information

Size:

50ug

Reactivity:

Human

Source:

Rabbit

Isotype:

IgG

Applications:

ELISA, IF

Recommended dilutions:

ELISA:1:2000-1:10000, IF:1:50-1:200

Protein Background:

Required during maturation of the 40S ribosomal subunit in the nucleolus.

Gene ID:

TSR1

Uniprot

Q2NL82

Synonyms:

Pre-rRNA-processing protein TSR1 homolog, TSR1, KIAA1401

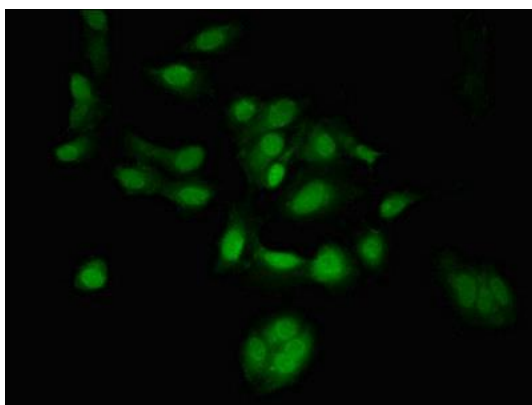
Immunogen:

Recombinant Human Pre-rRNA-processing protein TSR1 homolog protein (455-804AA).

Storage:

Preservative: 0.03% Proclin 300. Constituents: 50% Glycerol, 0.01M PBS, pH 7.4

Product Images



Immunofluorescent analysis of HeLa cells using PACO53858 at dilution of 1:100 and Alexa Fluor 488-conjugated AffiniPure Goat Anti-Rabbit IgG(H+L).