

PACO53794

---

## Product Information

**Size:**

50ug

**Reactivity:**

Escherichia coli

**Source:**

Rabbit

**Isotype:**

IgG

**Applications:**

ELISA, WB

**Recommended dilutions:**

ELISA:1:2000-1:10000, WB:1:500-1:5000

**Protein Background:**

Broad spectrum beta-lactamase which confers resistance to penicillins, as well as first, second and third-generation cephalosporins.

**Gene ID:**

bla

**Uniprot**

P28585

**Synonyms:**

Beta-lactamase CTX-M-1 (EC 3.5.2.6) (Beta-lactamase MEN-1) (Cefotaximase 1), bla, men1

**Immunogen:**

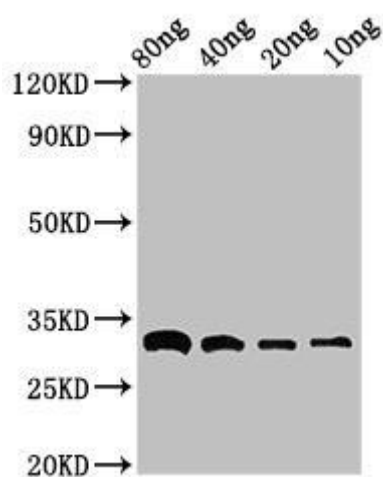
Recombinant Escherichia coli Beta-lactamase CTX-M-1 protein (29-291AA).

**Storage:**

Preservative: 0.03% Proclin 300. Constituents: 50% Glycerol, 0.01M PBS, pH 7.4

## Product Images

---



Western Blot. Positive WB detected in Recombinant protein. All lanes: bla antibody at 3 $\mu$ g/ml. Secondary. Goat polyclonal to rabbit IgG at 1/50000 dilution. Predicted band size: 33 kDa. Observed band size: 33 kDa.