

PACO53786

Product Information

Size:

50ug

Reactivity:

Escherichia coli

Source:

Rabbit

Isotype:

IgG

Applications:

ELISA, WB

Recommended dilutions:

ELISA:1:2000-1:10000, WB:1:500-1:5000

Protein Background:

Part of the ABC transporter complex CysAWTP (TC 3. A.1.6.1) involved in sulfate/thiosulfate import. This protein specifically binds thiosulfate and is involved in its transmembrane transport.

Gene ID:

cysP

Uniprot

P16700

Synonyms:

Thiosulfate-binding protein, cysP

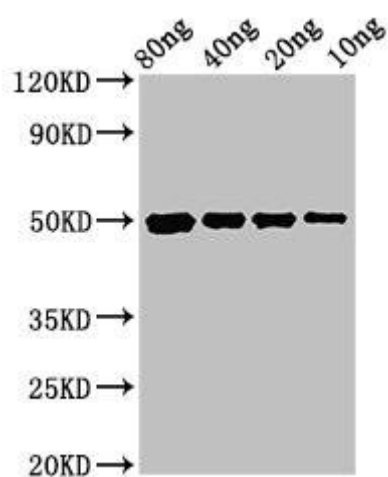
Immunogen:

Recombinant Escherichia coli Thiosulfate-binding protein (26-338AA).

Storage:

Preservative: 0.03% Proclin 300. Constituents: 50% Glycerol, 0.01M PBS, pH 7.4

Product Images



Western Blot. Positive WB detected in Recombinant protein. All lanes: cysP antibody at 3 μ g/ml. Secondary. Goat polyclonal to rabbit IgG at 1/50000 dilution. Predicted band size: 50 kDa. Observed band size: 50 kDa.