

PACO53774

Product Information

Size:

50ug

Reactivity:

Zebrafish

Source:

Rabbit

Isotype:

IgG

Applications:

ELISA, WB

Recommended dilutions:

ELISA:1:2000-1:10000, WB:1:500-1:5000

Protein Background:

extracellular space, BMP receptor binding, cytokine activity, protein heterodimerization activity, protein homodimerization activity, transforming growth factor beta receptor binding, BMP signaling pathway, cell migration involved in gastrulation, cell-cell signaling involved in cell fate commitment, determination of left/right symmetry.

Gene ID:

bmp2b

Uniprot

O93369

Synonyms:

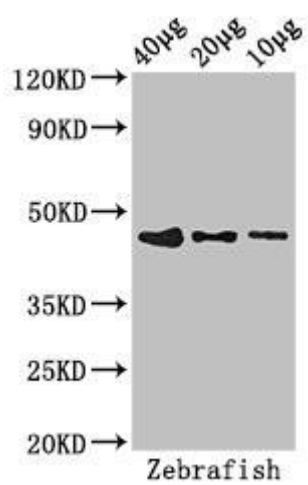
Immunogen:

Recombinant Zebrafish Bone morphogenetic protein 2 protein (24-411AA).

Storage:

Preservative: 0.03% Proclin 300. Constituents: 50% Glycerol, 0.01M PBS, pH 7.4

Product Images



Western Blot. Positive WB detected in: Zebrafish tissue 40µg, 20µg, 10µg. All lanes: bmp2b antibody at 2.8µg/ml. Secondary: Goat polyclonal to rabbit IgG at 1/50000 dilution. Predicted band size: 47 kDa. Observed band size: 47 kDa.