

STAT6 Antibody



PACO53738

Product Information

Size:

50ug

Reactivity:

Human

Source:

Rabbit

Isotype:

IgG

Applications:

ELISA, IHC, IF

Recommended dilutions:

ELISA:1:2000-1:10000, IHC:1:20-1:200,
IF:1:50-1:200

Protein Background:

Carries out a dual function: signal transduction and activation of transcription. Involved in IL4/interleukin-4- and IL3/interleukin-3-mediated signaling.

Gene ID:

STAT6

Uniprot

P42226

Synonyms:

Signal transducer and activator of transcription 6 (IL-4 Stat), STAT6

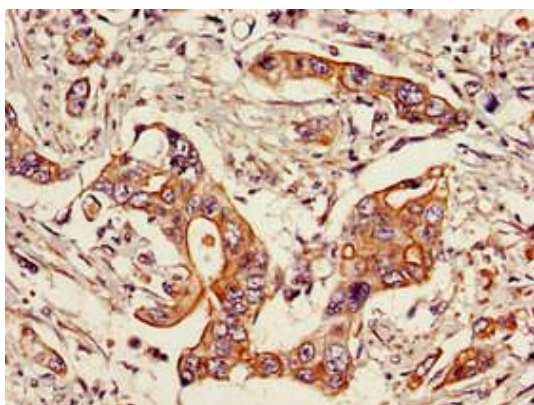
Immunogen:

Recombinant Human Signal transducer and activator of transcription 6 protein (1-319AA).

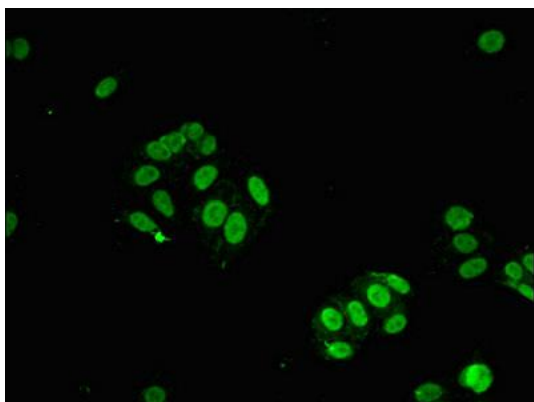
Storage:

Preservative: 0.03% Proclin 300. Constituents: 50% Glycerol, 0.01M PBS, pH 7.4

Product Images



Immunohistochemistry of paraffin-embedded human pancreatic cancer using PACO53738 at dilution of 1:100.



Immunofluorescent analysis of HepG2 cells using PACO53738 at dilution of 1:100 and Alexa Fluor 488-conjugated AffiniPure Goat Anti-Rabbit IgG(H+L).