

PACO53730

Product Information

Size:

50ug

Reactivity:

Human

Source:

Rabbit

Isotype:

IgG

Applications:

ELISA, IHC

Recommended dilutions:

ELISA:1:2000-1:10000, IHC:1:20-1:200

Protein Background:

Functions in lipid transport from the endoplasmic reticulum and is involved in a wide array of cellular functions probably through regulation of the biogenesis of lipid microdomains at the plasma membrane. Involved in the regulation of different receptors it plays a role in BDNF signaling and EGF signaling. Also regulates ion channels like the potassium channel and could modulate neurotransmitter release. Plays a role in calcium signaling through modulation together with ANK2 of the ITP3R-dependent calcium efflux at the endoplasmic reticulum. Plays a role in several other cell functions including proliferation, survival and death. Originally identified for its ability to bind various psychoactive drugs it is involved in learning processes, memory and mood alteration. Necessary for proper mitochondrial axonal transport in motor neurons, in particular the retrograde movement of mitochondria.

Gene ID:

SIGMAR1

Uniprot

Q99720

Synonyms:

Sigma non-opioid intracellular receptor 1 (Aging-associated gene 8 protein) (SR31747-binding protein) (SR-BP) (Sigma 1-type opioid receptor) (SIG-1R) (Sigma1-receptor) (Sigma1R) (hSigmaR1), SIGMAR1, OPRS1 SRBP

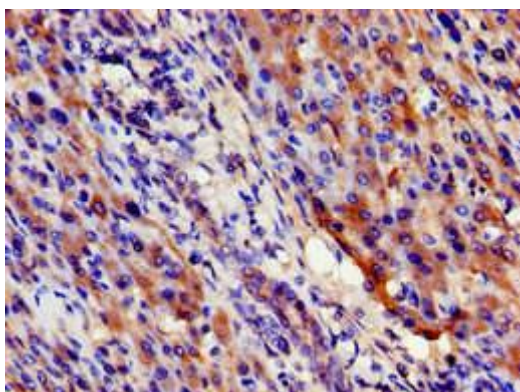
Immunogen:

Recombinant Human Sigma non-opioid intracellular receptor 1 protein (112-169AA).

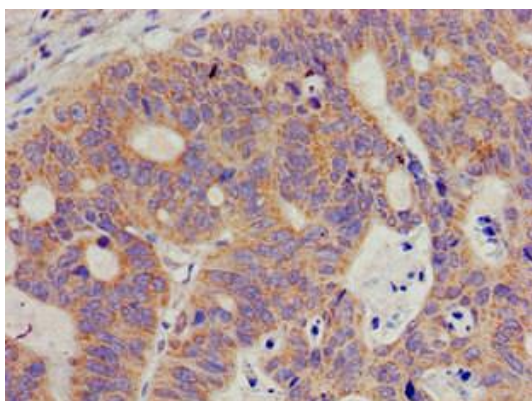
Storage:

Preservative: 0.03% Proclin 300. Constituents: 50% Glycerol, 0.01M PBS, pH 7.4

Product Images



Immunohistochemistry of paraffin-embedded human liver cancer using PACO53730 at dilution of 1:100.



Immunohistochemistry of paraffin-embedded human colon cancer using PACO53730 at dilution of 1:100.