

### Product Information

**Size:**

50ug

**Reactivity:**

Human

**Source:**

Rabbit

**Isotype:**

IgG

**Applications:**

ELISA, IHC

**Recommended dilutions:**

ELISA:1:2000-1:10000, IHC:1:20-1:200

**Protein Background:**

Receptor for prokineticin 2. Exclusively coupled to the G(q) subclass of heteromeric G proteins. Activation leads to mobilization of calcium, stimulation of phosphoinositide turnover and activation of p44/p42 mitogen-activated protein kinase.

**Gene ID:**

PROKR2

**Uniprot**

Q8NFJ6

**Synonyms:**

Prokineticin receptor 2 (PK-R2) (G-protein coupled receptor 73-like 1) (G-protein coupled receptor I5E) (GPR73b) (GPRg2), PROKR2, GPR73L1 PKR2

**Immunogen:**

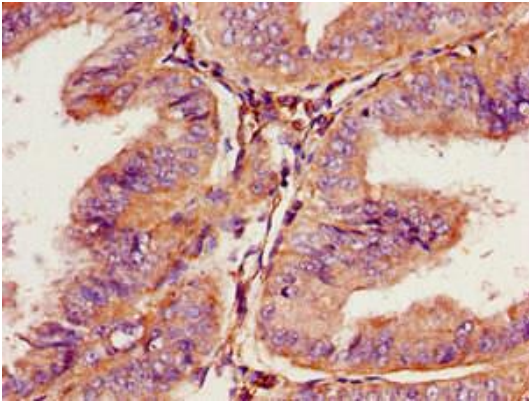
Recombinant Human Prokineticin receptor 2 protein (1-45AA).

**Storage:**

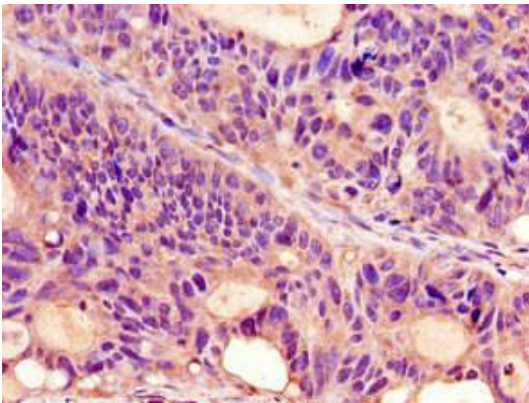
Preservative: 0.03% Proclin 300. Constituents: 50% Glycerol, 0.01M PBS, pH 7.4

## Product Images

---



Immunohistochemistry of paraffin-embedded human endometrial cancer using PACO53718 at dilution of 1:100.



Immunohistochemistry of paraffin-embedded human colon cancer using PACO53718 at dilution of 1:100.