

Product Information

Size:

50ug

Reactivity:

Rat, Human

Source:

Rabbit

Isotype:

IgG

Applications:

ELISA, WB

Recommended dilutions:

ELISA:1:2000-1:10000, WB:1:500-1:5000

Protein Background:

Involved in the processing of hormone and other protein precursors at sites comprised of pairs of basic amino acid, residues. Responsible for the release of glucagon from proglucagon in pancreatic A cells.

Gene ID:

Pcsk2

Uniprot

P28841

Synonyms:

Neuroendocrine convertase 2 (NEC 2) (EC 3.4.21.94) (KEX2-like endoprotease 2) (Prohormone convertase 2) (Proprotein convertase 2) (PC2), Pcsk2, Nec-2 Nec2 Rpc2

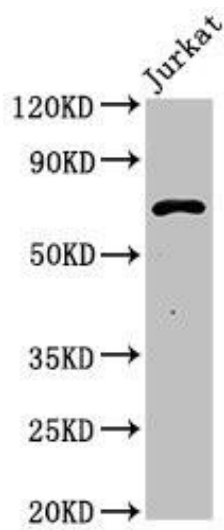
Immunogen:

Recombinant Rat Neuroendocrine convertase 2 protein (109-637AA).

Storage:

Preservative: 0.03% Proclin 300. Constituents: 50% Glycerol, 0.01M PBS, pH 7.4

Product Images



Western Blot. Positive WB detected in: Jurkat whole cell lysate. All lanes: Pcsk1 antibody at 3 μ g/ml. Secondary. Goat polyclonal to rabbit IgG at 1/50000 dilution. Predicted band size: 71 kDa. Observed band size: 71 kDa.