

# HSF1 Antibody



PACO53670

---

## Product Information

**Size:**

50ug

**Reactivity:**

Human

**Source:**

Rabbit

**Isotype:**

IgG

**Applications:**

ELISA, WB, IHC, IF

**Recommended dilutions:**

ELISA:1:2000-1:10000, WB:1:500-1:5000,  
IHC:1:20-1:200, IF:1:50-1:200

**Protein Background:**

DNA-binding protein that specifically binds heat shock promoter elements (HSE) and activates transcription. In higher eukaryotes, HSF is unable to bind to the HSE unless the cells are heat shocked.

**Gene ID:**

HSF1

**Uniprot**

Q00613

**Synonyms:**

Heat shock factor protein 1 (HSF 1) (Heat shock transcription factor 1) (HSTF 1), HSF1, HSTF1

**Immunogen:**

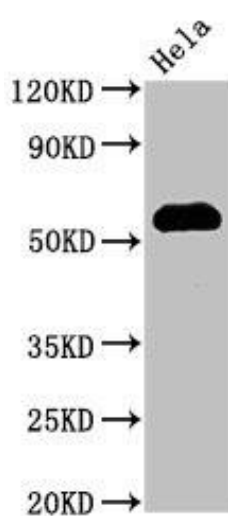
Recombinant Human Heat shock factor protein 1 protein (420-529AA).

**Storage:**

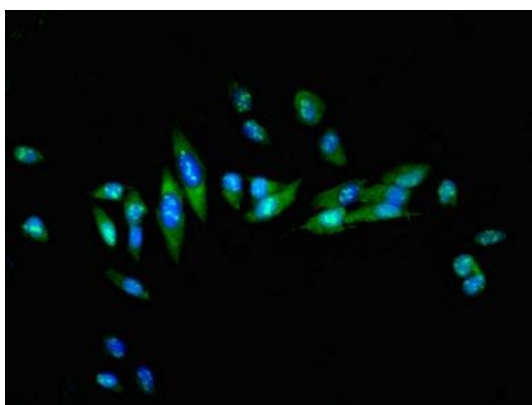
Preservative: 0.03% Proclin 300. Constituents: 50% Glycerol, 0.01M PBS, pH 7.4

## Product Images

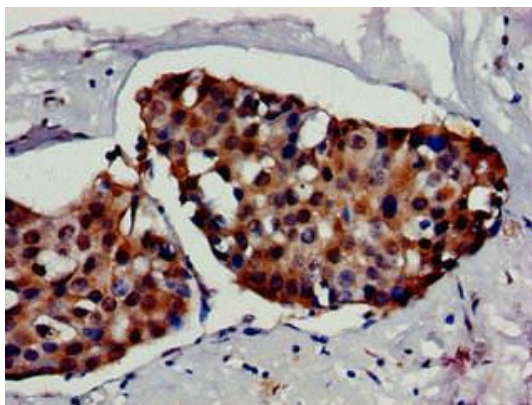
---



Western Blot. Positive WB detected in: HeLa whole cell lysate. All lanes: HSF1 antibody at 3 $\mu$ g/ml. Secondary. Goat polyclonal to rabbit IgG at 1/50000 dilution. Predicted band size: 58, 53 kDa. Observed band size: 58 kDa.



Immunofluorescent analysis of HeLa cells using PACO53670 at dilution of 1:100 and Alexa Fluor 488-conjugated AffiniPure Goat Anti-Rabbit IgG(H+L).



Immunohistochemistry of paraffin-embedded human breast cancer using PACO53670 at dilution of 1:100.