

F11R Antibody



PACO53598

Product Information

Size:

50ug

Reactivity:

Human

Source:

Rabbit

Isotype:

IgG

Applications:

ELISA, IHC, IF

Recommended dilutions:

ELISA:1:2000-1:10000, IHC:1:20-1:200,
IF:1:50-1:200

Protein Background:

Seems to play a role in epithelial tight junction formation. Appears early in primordial forms of cell junctions and recruits PARD3. The association of the PARD6-PARD3 complex may prevent the interaction of PARD3 with JAM1, thereby preventing tight junction assembly. Plays a role in regulating monocyte transmigration involved in integrity of epithelial barrier. Ligand for integrin alpha-L/beta-2 involved in memory T-cell and neutrophil transmigration. Involved in platelet activation.

Gene ID:

F11R

Uniprot

Q9Y624

Synonyms:

Junctional adhesion molecule A (JAM-A) (Junctional adhesion molecule 1) (JAM-1) (Platelet F11 receptor) (Platelet adhesion molecule 1) (PAM-1) (CD antigen CD321), F11R, JAM1 JCAM

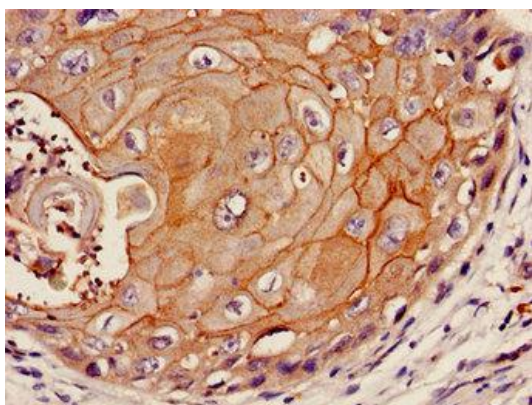
Immunogen:

Recombinant Human Junctional adhesion molecule A protein (31-224AA).

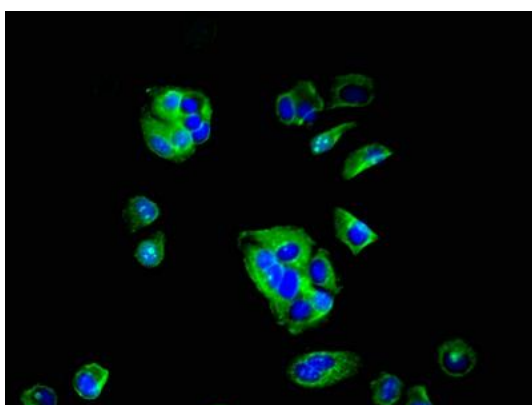
Storage:

Preservative: 0.03% Proclin 300. Constituents: 50% Glycerol, 0.01M PBS, pH 7.4

Product Images



Immunohistochemistry of paraffin-embedded human cervical cancer using PACO53598 at dilution of 1:100.



Immunofluorescent analysis of MCF-7 cells using PACO53598 at dilution of 1:100 and Alexa Fluor 488-conjugated AffiniPure Goat Anti-Rabbit IgG(H+L).