

Product Information

Size:

50ug

Reactivity:

Human, Mouse, Rat

Source:

Rabbit

Isotype:

IgG

Applications:

ELISA, WB, IHC

Recommended dilutions:

ELISA:1:2000-1:10000, WB:1:500-1:5000,
IHC:1:20-1:200

Protein Background:

Hydrolyzes lysophosphatidic acid, (LPA) containing a medium length fatty acid, chain to the corresponding monoacylglycerol. Has highest activity with lysophosphatidic acid, containing myristate (C14:0), monounsaturated oleate (C18:1) or palmitate (C16:0), and lower activity with C18:0 and C6:0 lysophosphatidic acid, .

Gene ID:

ACP6

Uniprot

Q9NPH0

Synonyms:

Lysophosphatidic acid, phosphatase type 6 (EC 3.1.3.2) (acid, phosphatase 6, lysophosphatidic) (acid, phosphatase-like protein 1) (PACPL1), ACP6, ACPL1 LPAP

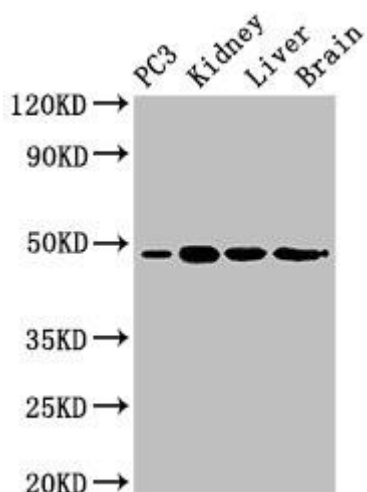
Immunogen:

Recombinant Human Lysophosphatidic acid, phosphatase type 6 protein (35-324AA).

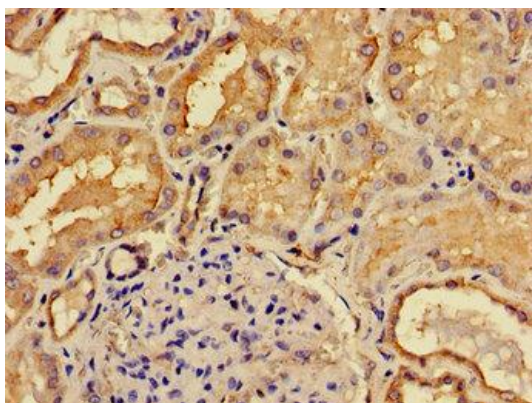
Storage:

Preservative: 0.03% Proclin 300. Constituents: 50% Glycerol, 0.01M PBS, pH 7.4

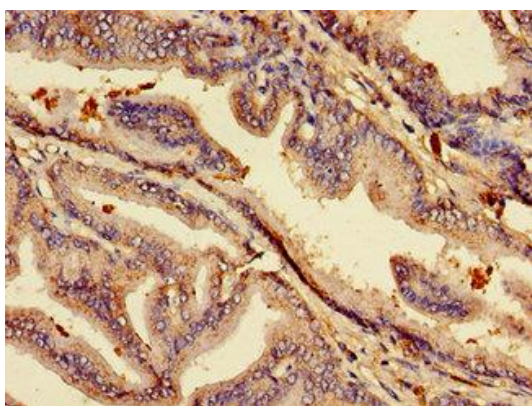
Product Images



Western Blot. Positive WB detected in: PC-3 whole cell lysate, Mouse kidney tissue, Mouse liver tissue, Rat brain tissue. All lanes: ACP6 antibody at 3 μ g/ml. Secondary. Goat polyclonal to rabbit IgG at 1/50000 dilution. Predicted band size: 49, 31 kDa. Observed band size: 49 kDa.



Immunohistochemistry of paraffin-embedded human kidney tissue using PACO53570 at dilution of 1:100.



Immunohistochemistry of paraffin-embedded human prostate tissue using PACO53570 at dilution of 1:100.