

# NDUFA4L2 Antibody



PACO53558

---

## Product Information

**Size:**

50ug

**Reactivity:**

Human

**Source:**

Rabbit

**Isotype:**

IgG

**Applications:**

ELISA, IHC

**Recommended dilutions:**

ELISA:1:2000-1:10000, IHC:1:20-1:200

**Protein Background:**

mitochondrial respiratory chain complex IV, NADH dehydrogenase (ubiquinone) activity.

**Gene ID:**

NDUFA4L2

**Uniprot**

Q9NRX3

**Synonyms:**

NADH dehydrogenase [ubiquinone] 1 alpha subcomplex subunit 4-like 2 (NADH-ubiquinone oxidoreductase MLRQ subunit homolog) (NUOMS), NDUFA4L2

**Immunogen:**

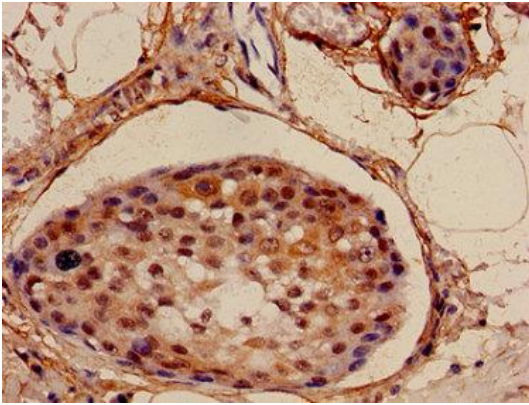
Recombinant Human NADH dehydrogenase [ubiquinone] 1 &alpha; subcomplex subunit 4-like 2 protein (48-87AA).

**Storage:**

Preservative: 0.03% Proclin 300. Constituents: 50% Glycerol, 0.01M PBS, pH 7.4

## Product Images

---



Immunohistochemistry of paraffin-embedded human breast cancer using PACO53558 at dilution of 1:100.