

# ARPC1A Antibody



PACO53538

---

## Product Information

**Size:**

50ug

**Reactivity:**

Human

**Source:**

Rabbit

**Isotype:**

IgG

**Applications:**

ELISA, WB, IF

**Recommended dilutions:**

ELISA:1:2000-1:10000, WB:1:500-1:5000,  
IF:1:50-1:200

**Protein Background:**

Probably functions as component of the Arp2/3 complex which is involved in regulation of actin polymerization and together with an activating nucleation-promoting factor (NPF) mediates the formation of branched actin networks.

**Gene ID:**

ARPC1A

**Uniprot**

Q92747

**Synonyms:**

Actin-related protein 2/3 complex subunit 1A (SOP2-like protein), ARPC1A, SOP2L

**Immunogen:**

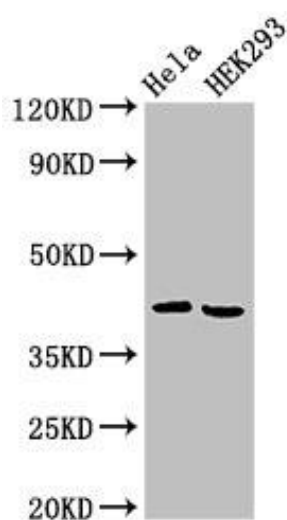
Recombinant Human Actin-related protein 2/3 complex subunit 1A protein (175-317AA).

**Storage:**

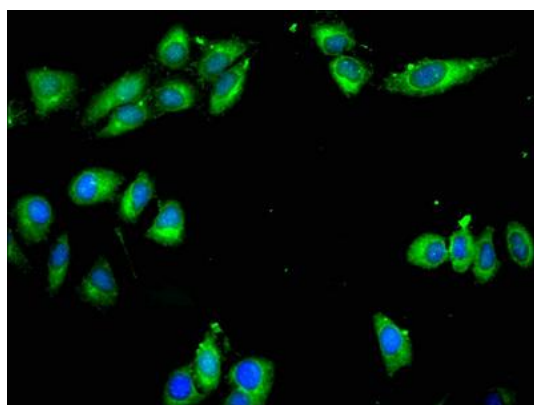
Preservative: 0.03% Proclin 300. Constituents: 50% Glycerol, 0.01M PBS, pH 7.4

## Product Images

---



Western Blot. Positive WB detected in: HeLa whole cell lysate, HEK293 whole cell lysate. All lanes: ARPC1A antibody at 4 $\mu$ g/ml. Secondary. Goat polyclonal to rabbit IgG at 1/50000 dilution. Predicted band size: 42, 39 kDa. Observed band size: 42 kDa.



Immunofluorescent analysis of HeLa cells using PACO53538 at dilution of 1:100 and Alexa Fluor 488-conjugated AffiniPure Goat Anti-Rabbit IgG(H+L).