

Product Information

Size:

50ug

Reactivity:

Human

Source:

Rabbit

Isotype:

IgG

Applications:

ELISA, WB, IHC, IF

Recommended dilutions:

ELISA:1:2000-1:10000, WB:1:500-1:5000,
IHC:1:20-1:200, IF:1:50-1:200

Protein Background:

Sodium-phosphate symporter which plays a fundamental housekeeping role in phosphate transport, such as absorbing phosphate from interstitial fluid for normal cellular functions such as cellular metabolism, signal transduction, and nucleic acid, and lipid synthesis. May play a role in extracellular matrix and cartilage calcification as well as in vascular calcification. May function as a retroviral receptor as it confers human cells susceptibility to infection to Gibbon Ape Leukemia Virus (GaLV), Simian sarcoma-associated virus (SSAV) and Feline leukemia virus subgroup B (FeLV-B) as well as 10A1 murine leukemia virus (10A1 MLV).

Gene ID:

SLC20A1

Uniprot

Q8WUM9

Synonyms:

Sodium-dependent phosphate transporter 1 (Gibbon ape leukemia virus receptor 1) (GLVR-1) (Leukemia virus receptor 1 homolog) (Phosphate transporter 1) (PiT-1) (Solute carrier family 20 member 1), SLC20A1, GLVR1 PIT1

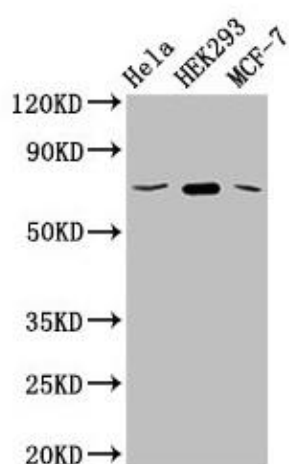
Immunogen:

Recombinant Human Sodium-dependent phosphate transporter 1 protein (263-458AA).

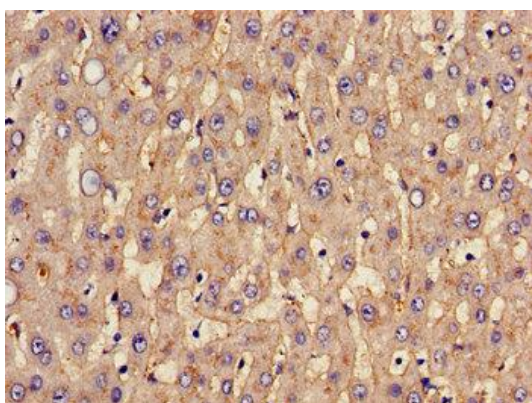
Storage:

Preservative: 0.03% Proclin 300. Constituents: 50% Glycerol, 0.01M PBS, pH 7.4

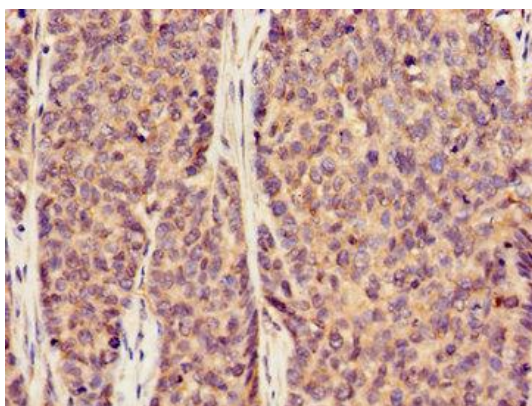
Product Images



Western Blot. Positive WB detected in: HeLa whole cell lysate, HEK293 whole cell lysate, MCF-7 whole cell lysate. All lanes: SLC20A1 antibody at 2.5 μ g/ml. Secondary. Goat polyclonal to rabbit IgG at 1/50000 dilution. Predicted band size: 74 kDa. Observed band size: 74 kDa.



Immunohistochemistry of paraffin-embedded human liver tissue using PACO53498 at dilution of 1:100.



Immunohistochemistry of paraffin-embedded human ovarian cancer using PACO53498 at dilution of 1:100.