

Product Information

Size:

50ug

Reactivity:

Human

Source:

Rabbit

Isotype:

IgG

Applications:

ELISA, WB, IHC, IF

Recommended dilutions:

ELISA:1:2000-1:10000, WB:1:500-1:5000,
IHC:1:20-1:200, IF:1:50-1:200

Protein Background:

Plays a role in neuronal development and polarity, as well as in axon growth and guidance, neuronal growth cone collapse and cell migration. Necessary for signaling by class 3 semaphorins and subsequent remodeling of the cytoskeleton. May play a role in endocytosis.

Gene ID:

DPYSL2

Uniprot

Q16555

Synonyms:

Dihydropyrimidinase-related protein 2 (DRP-2) (Collapsin response mediator protein 2) (CRMP-2) (N2A3) (Unc-33-like phosphoprotein 2) (ULIP-2), DPYSL2, CRMP2, ULIP2

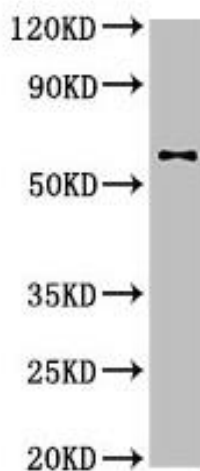
Immunogen:

Recombinant Human Dihydropyrimidinase-related protein 2 protein (1-572AA).

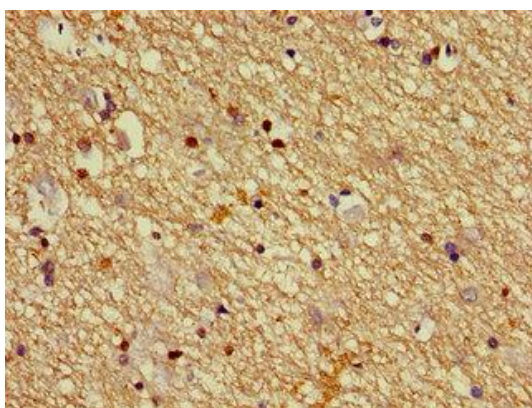
Storage:

Preservative: 0.03% Proclin 300. Constituents: 50% Glycerol, 0.01M PBS, pH 7.4

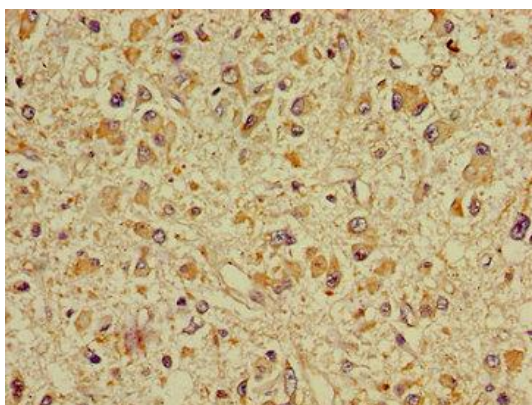
Product Images



Western Blot. Positive WB detected in: U87 whole cell lysate. All lanes: DPYSL2 antibody at 4 μ g/ml. Secondary. Goat polyclonal to rabbit IgG at 1/50000 dilution. Predicted band size: 63, 59 kDa. Observed band size: 63 kDa.



Immunohistochemistry of paraffin-embedded human brain tissue using PACO53450 at dilution of 1:100.



Immunohistochemistry of paraffin-embedded human glioma using PACO53450 at dilution of 1:100.