

PACO53442

Product Information

Size:

50ug

Reactivity:

Human

Source:

Rabbit

Isotype:

IgG

Applications:

ELISA, WB

Recommended dilutions:

ELISA:1:2000-1:10000, WB:1:500-1:5000

Protein Background:

Transcription factor that binds to and transactivates the TSHB promoter. Binds to a minimal DNA-binding sequence 5'-[TC][AG][AG]TTA[TC][AG]-3'.

Gene ID:

TEF

Uniprot

Q10587

Synonyms:

Thyrotroph embryonic factor, TEF, KIAA1655

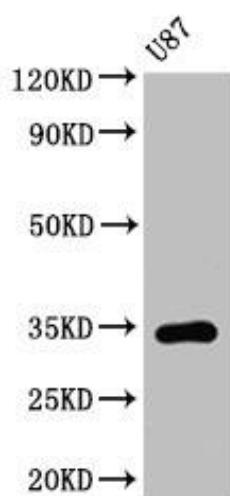
Immunogen:

Recombinant Human Thyrotroph embryonic factor protein (7-303AA).

Storage:

Preservative: 0.03% Proclin 300. Constituents: 50% Glycerol, 0.01M PBS, pH 7.4

Product Images



Western Blot. Positive WB detected in: U87 whole cell lysate. All lanes: TEF antibody at 3.2 μ g/ml. Secondary. Goat polyclonal to rabbit IgG at 1/50000 dilution. Predicted band size: 34, 31 kDa. Observed band size: 34 kDa.