

PACO53422

Product Information

Size:

50ug

Reactivity:

Chlamydia trachomatis

Source:

Rabbit

Isotype:

IgG

Applications:

ELISA, WB

Recommended dilutions:

ELISA:1:2000-1:10000, WB:1:500-1:5000

Protein Background:

In elementary bodies (EBs, the infectious stage, which is able to survive outside the host cell) provides the structural integrity of the outer envelope through disulfide cross-links with the small cysteine-rich protein and the major outer membrane protein. It has been described in publications as the Sarkosyl-insoluble COMC (Chlamydia outer membrane complex), and serves as the functional equivalent of peptidoglycan.

Gene ID:

omcB

Uniprot

P0CC04

Synonyms:

Large cysteine-rich periplasmic protein OmcB (Large-CRP) (60 kDa cysteine-rich OMP) (60 kDa outer membrane protein) (Cysteine-rich outer membrane protein) (CRP), omcB, omp2 omp2B

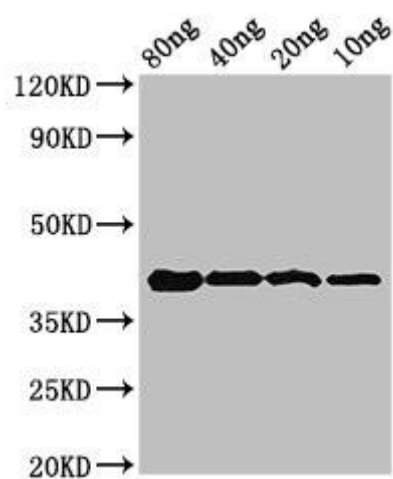
Immunogen:

Recombinant Chlamydia trachomatis Large cysteine-rich periplasmic protein OmcB protein (15-243AA).

Storage:

Preservative: 0.03% Proclin 300. Constituents: 50% Glycerol, 0.01M PBS, pH 7.4

Product Images



Western Blot. Positive WB detected in Recombinant protein. All lanes: omcB antibody at 3.2 μ g/ml. Secondary. Goat polyclonal to rabbit IgG at 1/50000 dilution. Predicted band size: 42 kDa. Observed band size: 42 kDa.