

CLDN3 Antibody



PACO53410

Product Information

Size:

50ug

Reactivity:

Human

Source:

Rabbit

Isotype:

IgG

Applications:

ELISA, WB, IHC

Recommended dilutions:

ELISA:1:2000-1:10000, WB:1:500-1:5000,
IHC:1:20-1:200

Protein Background:

Plays a major role in tight junction-specific obliteration of the intercellular space, through calcium-independent cell-adhesion activity.

Gene ID:

CLDN3

Uniprot

O15551

Synonyms:

Claudin-3 (Clostridium perfringens enterotoxin receptor 2) (CPE-R 2) (CPE-receptor 2) (Rat ventral prostate.1 protein homolog) (hRVP1), CLDN3, C7orf1 CPETR2

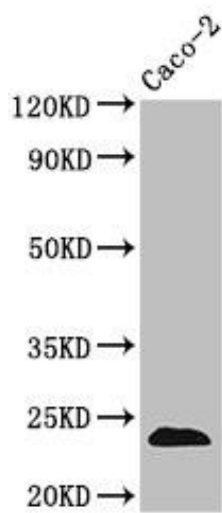
Immunogen:

Recombinant Human Claudin-3 protein (181-220AA).

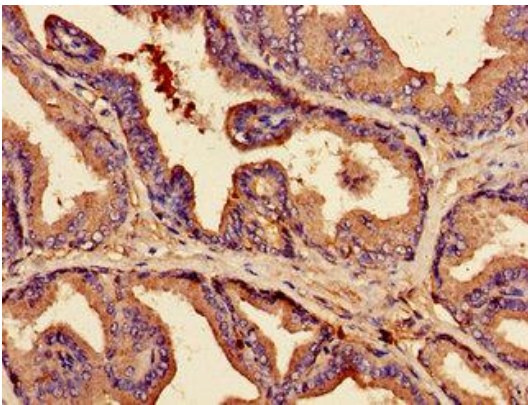
Storage:

Preservative: 0.03% Proclin 300. Constituents: 50% Glycerol, 0.01M PBS, pH 7.4

Product Images



Western Blot. Positive WB detected in: Caco-2 whole cell lysate. All lanes: CLDN3 antibody at 3.5 μ g/ml. Secondary. Goat polyclonal to rabbit IgG at 1/50000 dilution. Predicted band size: 24 kDa. Observed band size: 24 kDa.



Immunohistochemistry of paraffin-embedded human prostate tissue using PACO53410 at dilution of 1:100.