

TOM1 Antibody



PACO53382

Product Information

Size:

50ug

Reactivity:

Human, Mouse

Source:

Rabbit

Isotype:

IgG

Applications:

ELISA, WB, IHC, IF

Recommended dilutions:

ELISA:1:2000-1:10000, WB:1:500-1:5000,
IHC:1:20-1:200, IF:1:50-1:200

Protein Background:

May be involved in intracellular trafficking. Probable association with membranes.

Gene ID:

TOM1

Uniprot

O60784

Synonyms:

Target of Myb protein 1, TOM1

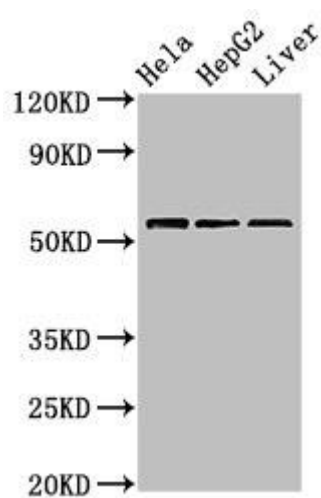
Immunogen:

Recombinant Human Target of Myb protein 1 protein (306-487AA).

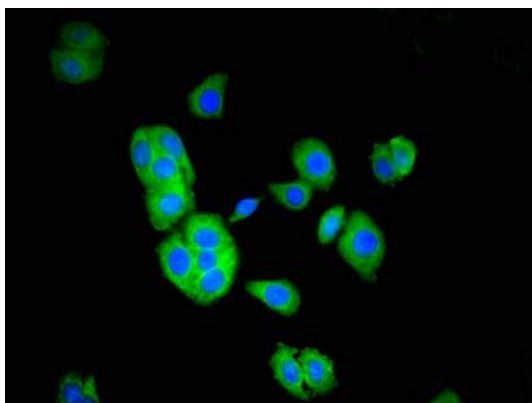
Storage:

Preservative: 0.03% Proclin 300. Constituents: 50% Glycerol, 0.01M PBS, pH 7.4

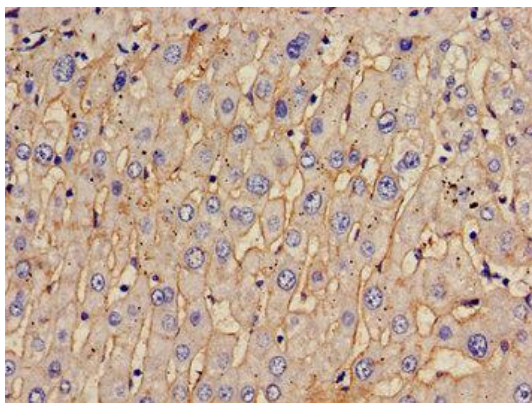
Product Images



Western Blot. Positive WB detected in: HeLa whole cell lysate, HepG2 whole cell lysate, Mouse liver tissue. All lanes: TOM1 antibody at 2.4 μ g/ml. Secondary. Goat polyclonal to rabbit IgG at 1/50000 dilution. Predicted band size: 54, 49, 51 kDa. Observed band size: 54 kDa.



Immunofluorescent analysis of HepG2 cells using PACO53382 at dilution of 1:100 and Alexa Fluor 488-conjugated AffiniPure Goat Anti-Rabbit IgG(H+L).



Immunohistochemistry of paraffin-embedded human liver tissue using PACO53382 at dilution of 1:100.