

SERINC1 Antibody



PACO53358

Product Information

Size:

50ug

Reactivity:

Human, Mouse

Source:

Rabbit

Isotype:

IgG

Applications:

ELISA, WB, IF

Recommended dilutions:

ELISA:1:2000-1:10000, WB:1:500-1:5000,
IF:1:50-1:200

Protein Background:

Enhances the incorporation of serine into phosphatidylserine and sphingolipids.

Gene ID:

SERINC1

Uniprot

Q9NRX5

Synonyms:

Serine incorporator 1 (Tumor differentially expressed protein 1-like) (Tumor differentially expressed protein 2), SERINC1, KIAA1253 TDE1L TDE2

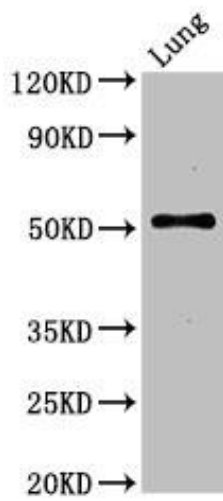
Immunogen:

Recombinant Human Serine incorporator 1 protein (331-387AA).

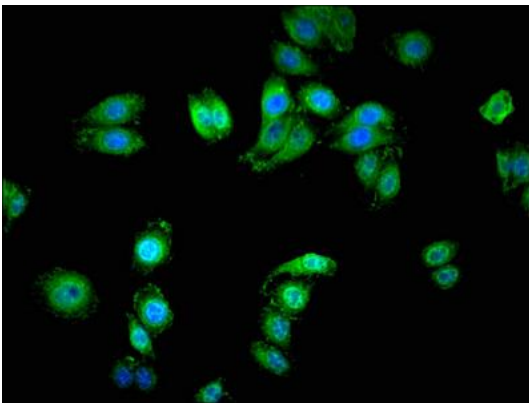
Storage:

Preservative: 0.03% Proclin 300. Constituents: 50% Glycerol, 0.01M PBS, pH 7.4

Product Images



Western Blot. Positive WB detected in: Mouse lung tissue. All lanes: SERINC1 antibody at 3 μ g/ml. Secondary. Goat polyclonal to rabbit IgG at 1/50000 dilution. Predicted band size: 51 kDa. Observed band size: 51 kDa.



Immunofluorescent analysis of HepG2 cells using PACO53358 at dilution of 1:100 and Alexa Fluor 488-conjugated AffiniPure Goat Anti-Rabbit IgG(H+L).