

PACO53310

---

## Product Information

**Size:**

50ug

**Reactivity:**

Human

**Source:**

Rabbit

**Isotype:**

IgG

**Applications:**

ELISA, IHC, IF

**Recommended dilutions:**

ELISA:1:2000-1:10000, IHC:1:20-1:200,  
IF:1:50-1:200

**Protein Background:**

Serine protease which is capable of degrading a number of proteins such as casein, fibrinogen, kininogen, fibronectin and collagen type IV. Also cleaves L1CAM in response to increased neural activity. Induces neurite outgrowth and fasciculation of cultured hippocampal neurons. Plays a role in the formation and maturation of orphan and small synaptic boutons in the Schaffer-collateral pathway, regulates Schaffer-collateral long-term potentiation in the hippocampus and is required for memory acquisition and synaptic plasticity. Involved in skin desquamation and keratinocyte proliferation. Plays a role in the secondary phase of pathogenesis following spinal cord injury.

**Gene ID:**

KLK8

**Uniprot**

O60259

**Synonyms:**

Kallikrein-8 (hK8) (EC 3.4.21.118) (Neuropsin) (NP) (Ovasin) (Serine protease 19) (Serine protease TADG-14) (Tumor-associated differentially expressed gene 14 protein), KLK8, NRPN PRSS19 TADG14

**Immunogen:**

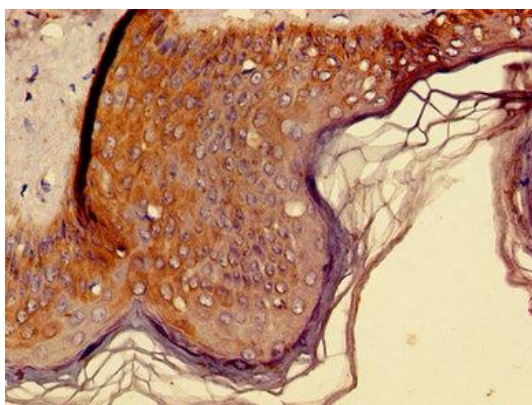
Recombinant Human Kallikrein-8 protein (87-241AA).

**Storage:**

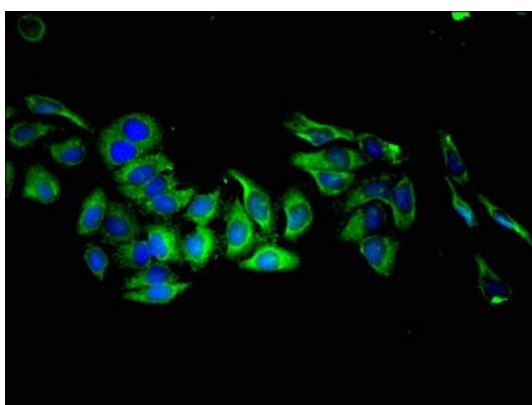
Preservative: 0.03% Proclin 300. Constituents: 50% Glycerol, 0.01M PBS, pH 7.4

## Product Images

---



Immunohistochemistry of paraffin-embedded human skin tissue using PACO53310 at dilution of 1:100.



Immunofluorescent analysis of HepG2 cells using PACO53310 at dilution of 1:100 and Alexa Fluor 488-conjugated AffiniPure Goat Anti-Rabbit IgG(H+L).