

# KLF7 Antibody



PACO53306

---

## Product Information

**Size:**

50ug

**Reactivity:**

Human, Mouse

**Source:**

Rabbit

**Isotype:**

IgG

**Applications:**

ELISA, WB

**Recommended dilutions:**

ELISA:1:2000-1:10000, WB:1:500-1:5000

**Protein Background:**

Transcriptional activator. Binds in vitro to the CACCC motif of the beta-globin promoter and to the SP1 recognition sequence.

**Gene ID:**

KLF7

**Uniprot**

O75840

**Synonyms:**

Krueppel-like factor 7 (Ubiquitous krueppel-like factor), KLF7, UKLF

**Immunogen:**

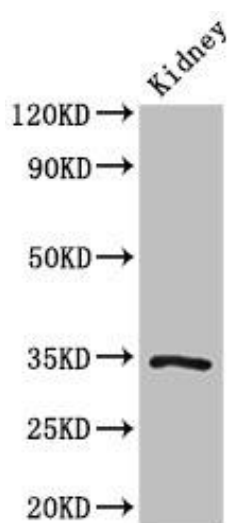
Recombinant Human Krueppel-like factor 7 protein (114-220AA).

**Storage:**

Preservative: 0.03% Proclin 300. Constituents: 50% Glycerol, 0.01M PBS, pH 7.4

## Product Images

---



Western Blot. Positive WB detected in: Mouse kidney tissue. All lanes: KLF7 antibody at 3 $\mu$ g/ml. Secondary. Goat polyclonal to rabbit IgG at 1/50000 dilution. Predicted band size: 34, 30, 25, 31, 14, 10 kDa. Observed band size: 34 kDa.