

Product Information

Size:

50ug

Reactivity:

Human

Source:

Rabbit

Isotype:

IgG

Applications:

ELISA, IHC, IP

Recommended dilutions:

ELISA:1:2000-1:10000, IHC:1:50-1:200,
IP:1:200-1:2000

Protein Background:

Mitotic kinesin required for chromosome passenger complex (CPC)-mediated cytokinesis. Following phosphorylation by PLK1, involved in recruitment of PLK1 to the central spindle. Interacts with guanosine triphosphate (GTP)-bound forms of RAB6A and RAB6B. May act as a motor required for the retrograde RAB6 regulated transport of Golgi membranes and associated vesicles along microtubules. Has a microtubule plus end-directed motility.

Gene ID:

KIF20A

Uniprot

O95235

Synonyms:

Kinesin-like protein KIF20A (GG10_2) (Mitotic kinesin-like protein 2) (MKlp2) (Rab6-interacting kinesin-like protein) (Rabkinesin-6), KIF20A, MKLP2 RAB6KIFL

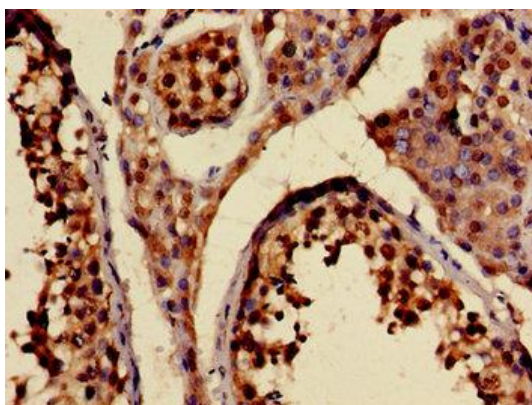
Immunogen:

Recombinant Human Kinesin-like protein KIF20A protein (161-294AA).

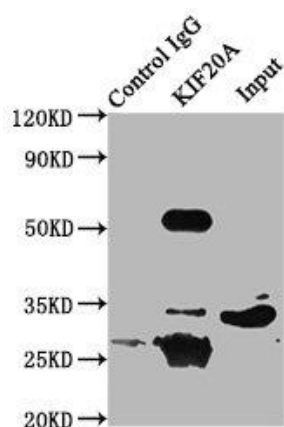
Storage:

Preservative: 0.03% Proclin 300. Constituents: 50% Glycerol, 0.01M PBS, pH 7.4

Product Images



Immunohistochemistry of paraffin-embedded human testis tissue using PACO53302 at dilution of 1:100.



Immunoprecipitating KIF20A in 293 whole cell lysate . Lane 1: Rabbit control IgG (1 μ g) instead of PACO53302 in 293 whole cell lysate. For western blotting, a HRP-conjugated Protein G antibody was used as the secondary antibody (1/2000). Lane 2: PACO53302 (6 μ g) + 293 whole cell lysate (500 μ g). Lane 3: 293 whole cell lysate (10 μ g).