

PACO53230

Product Information

Size:

50ug

Reactivity:

Human

Source:

Rabbit

Isotype:

IgG

Applications:

ELISA, WB, IF, IP

Recommended dilutions:

ELISA:1:2000-1:10000, WB:1:500-1:5000,
IF:1:50-1:500, IP:1:200-1:2000

Protein Background:

Likely involved in the mobilization of calcium as a result of the TCR/CD3 complex interaction. Binds to cyclophilin B.

Gene ID:

CAMLG

Uniprot

P49069

Synonyms:

Calcium signal-modulating cyclophilin ligand (CAML), CAMLG, CAML

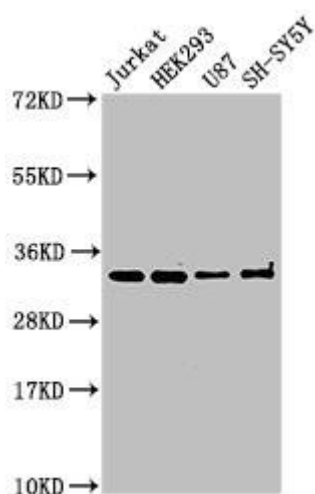
Immunogen:

Recombinant Human Calcium signal-modulating cyclophilin ligand protein (1-189AA).

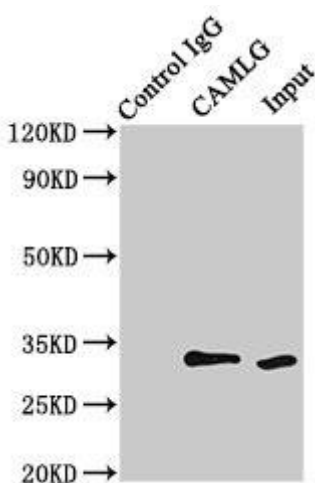
Storage:

Preservative: 0.03% Proclin 300. Constituents: 50% Glycerol, 0.01M PBS, pH 7.4

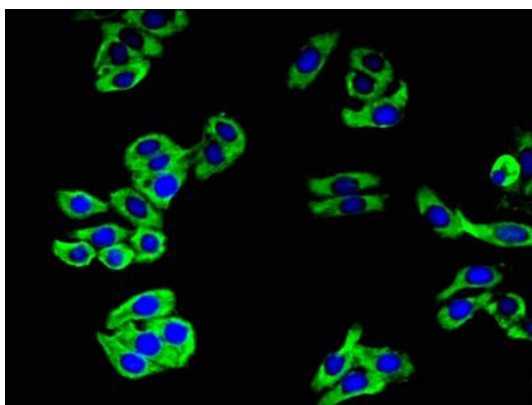
Product Images



Western Blot. Positive WB detected in: Jurkat whole cell lysate, HEK293 whole cell lysate, U87 whole cell lysate, SH-SY5Y whole cell lysate. All lanes: CAMLG antibody at 3 μ g/ml. Secondary: Goat polyclonal to rabbit IgG at 1/50000 dilution. Predicted band size: 33 kDa. Observed band size: 33 kDa.



Immunoprecipitating CAMLG in HEK293 whole cell lysate. Lane 1: Rabbit control IgG (1 μ g) instead of PACO53230 in HEK293 whole cell lysate. For western blotting, a HRP-conjugated Protein G antibody was used as the secondary antibody (1/2000). Lane 2: PACO53230 (8 μ g) + HEK293 whole cell lysate (500 μ g). Lane 3: HEK293 whole cell lysate (10 μ g).



Immunofluorescent analysis of HepG2 cells using PACO53230 at dilution of 1:100 and Alexa Fluor 488-conjugated AffiniPure Goat Anti-Rabbit IgG(H+L).