

# MAB21L2 Antibody



PACO53198

---

## Product Information

**Size:**

50ug

**Reactivity:**

Human, Mouse

**Source:**

Rabbit

**Isotype:**

IgG

**Applications:**

ELISA, WB, IF

**Recommended dilutions:**

ELISA:1:2000-1:10000, WB:1:500-1:5000,  
IF:1:50-1:200

**Protein Background:**

Required for several aspects of embryonic development including normal development of the eye.

**Gene ID:**

MAB21L2

**Uniprot**

Q9Y586

**Synonyms:**

Protein mab-21-like 2, MAB21L2

**Immunogen:**

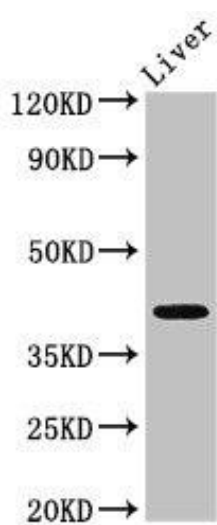
Recombinant Human Protein mab-21-like 2 protein (1-300AA).

**Storage:**

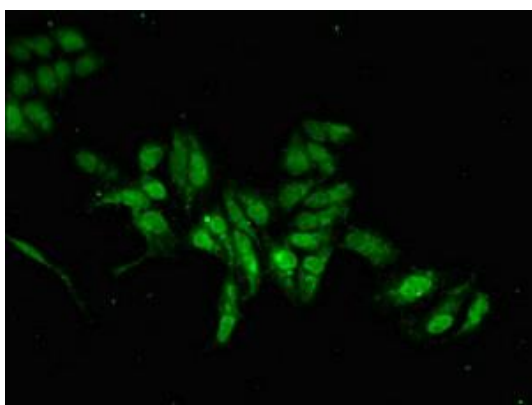
Preservative: 0.03% Proclin 300. Constituents: 50% Glycerol, 0.01M PBS, pH 7.4

## Product Images

---



Western Blot. Positive WB detected in: Mouse liver tissue. All lanes: MAB21L2 antibody at 3 $\mu$ g/ml. Secondary. Goat polyclonal to rabbit IgG at 1/50000 dilution. Predicted band size: 41 kDa. Observed band size: 41 kDa.



Immunofluorescent analysis of HeLa cells using PACO53198 at dilution of 1:100 and Alexa Fluor 488-conjugated AffiniPure Goat Anti-Rabbit IgG(H+L).