

ISOC1 Antibody



PACO53146

Product Information

Size:

50ug

Reactivity:

Human

Source:

Rabbit

Isotype:

IgG

Applications:

ELISA, WB, IHC

Recommended dilutions:

ELISA:1:2000-1:10000, WB:1:500-1:5000,
IHC:1:20-1:200

Protein Background:

cytoplasm, extracellular exosome, peroxisome.

Gene ID:

ISOC1

Uniprot

Q96CN7

Synonyms:

Isochorismatase domain-containing protein 1, ISOC1

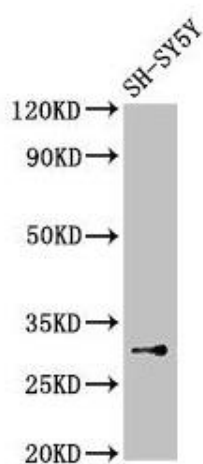
Immunogen:

Recombinant Human Isochorismatase domain-containing protein 1 protein (155-298AA).

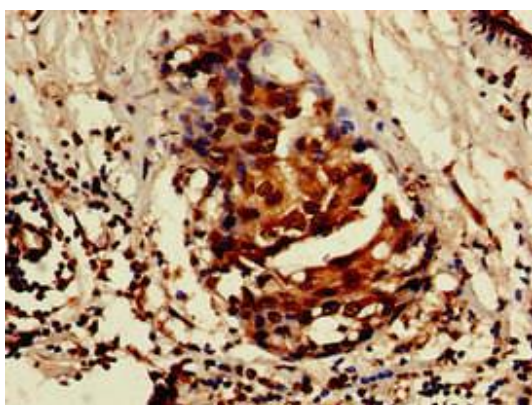
Storage:

Preservative: 0.03% Proclin 300. Constituents: 50% Glycerol, 0.01M PBS, pH 7.4

Product Images



Western Blot. Positive WB detected in: SH-SY5Y whole cell lysate. All lanes: ISOC1 antibody at 3.5 μ g/ml. Secondary. Goat polyclonal to rabbit IgG at 1/50000 dilution. Predicted band size: 33 kDa. Observed band size: 33 kDa.



Immunohistochemistry of paraffin-embedded human breast cancer using PACO53146 at dilution of 1:100.