

Product Information

Size:

50ug

Reactivity:

Human

Source:

Rabbit

Isotype:

IgG

Applications:

ELISA, IHC, IF

Recommended dilutions:

ELISA:1:2000-1:10000, IHC:1:20-1:200,
IF:1:50-1:200

Protein Background:

Component of a ciliary calcium channel that controls calcium concentration within primary cilia without affecting cytoplasmic calcium concentration. Forms a heterodimer with PKD2L1 in primary cilia and forms a calcium-permeant ciliary channel that regulates sonic hedgehog/SHH signaling and GLI2 transcription. Does not constitute the pore-forming subunit. Also involved in left/right axis specification downstream of nodal flow: forms a complex with PKD2 in cilia to facilitate flow detection in left/right patterning.

Gene ID:

PKD1L1

Uniprot

Q8TDX9

Synonyms:

Polycystic kidney disease protein 1-like 1 (PC1-like 1 protein) (Polycystin-1L1), PKD1L1

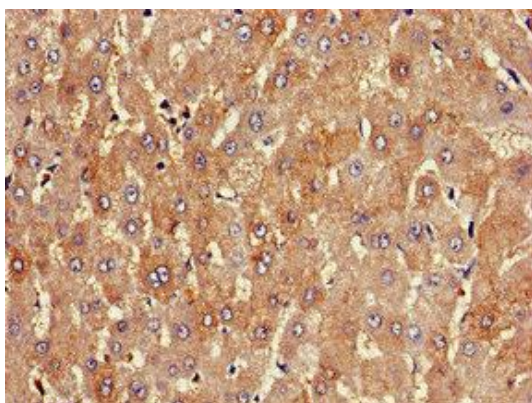
Immunogen:

Recombinant Human Polycystic kidney disease protein 1-like 1 protein (921-1164AA).

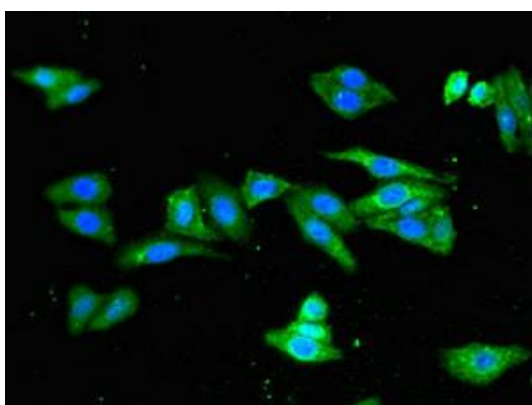
Storage:

Preservative: 0.03% Proclin 300. Constituents: 50% Glycerol, 0.01M PBS, pH 7.4

Product Images



Immunohistochemistry of paraffin-embedded human liver tissue using PACO53138 at dilution of 1:100.



Immunofluorescent analysis of HepG2 cells using PACO53138 at dilution of 1:100 and Alexa Fluor 488-conjugated AffiniPure Goat Anti-Rabbit IgG(H+L).