

TBC1D15 Antibody



PACO53134

Product Information

Size:

50ug

Reactivity:

Human

Source:

Rabbit

Isotype:

IgG

Applications:

ELISA, WB, IHC, IF

Recommended dilutions:

ELISA:1:2000-1:10000, WB:1:500-1:5000,
IHC:1:20-1:200, IF:1:50-1:200

Protein Background:

Acts as a GTPase activating protein for RAB7A. Does not act on RAB4, RAB5 or RAB6.

Gene ID:

TBC1D15

Uniprot

Q8TC07

Synonyms:

TBC1 domain family member 15 (GTPase-activating protein RAB7) (GAP for RAB7) (Rab7-GAP), TBC1D15

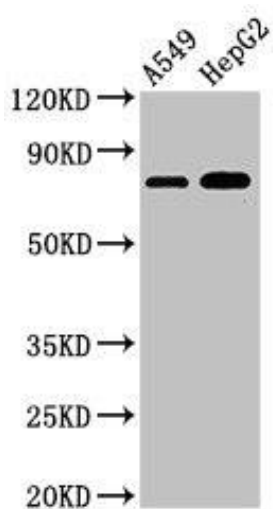
Immunogen:

Recombinant Human TBC1 domain family member 15 protein (283-404AA).

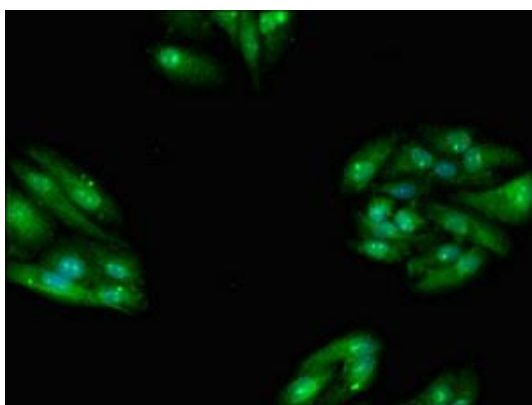
Storage:

Preservative: 0.03% Proclin 300. Constituents: 50% Glycerol, 0.01M PBS, pH 7.4

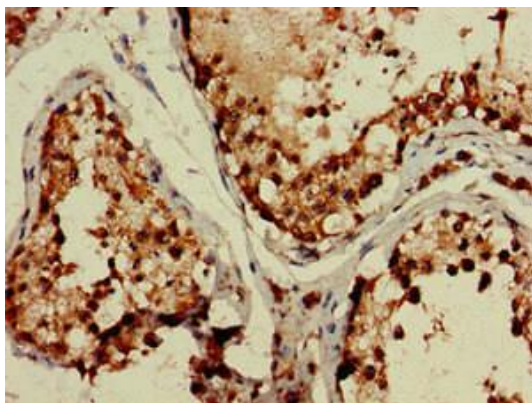
Product Images



Western Blot. Positive WB detected in: A549 whole cell lysate, HepG2 whole cell lysate. All lanes: TBC1D15 antibody at 3 μ g/ml. Secondary: Goat polyclonal to rabbit IgG at 1/50000 dilution. Predicted band size: 80, 78, 79 kDa. Observed band size: 80 kDa.



Immunofluorescent analysis of HepG2 cells using PACO53134 at dilution of 1:100 and Alexa Fluor 488-conjugated AffiniPure Goat Anti-Rabbit IgG(H+L).



Immunohistochemistry of paraffin-embedded human testis tissue using PACO53134 at dilution of 1:100.