

PACO53130

---

## Product Information

**Size:**

50ug

**Reactivity:**

Human, Rat

**Source:**

Rabbit

**Isotype:**

IgG

**Applications:**

ELISA, WB

**Recommended dilutions:**

ELISA:1:2000-1:10000, WB:1:500-1:2000

**Protein Background:**

**Gene ID:**

CCDC26

**Uniprot**

Q8TAB7

**Synonyms:**

Putative coiled-coil domain-containing protein 26 (Retinoic acid, modulator), CCDC26, RAM

**Immunogen:**

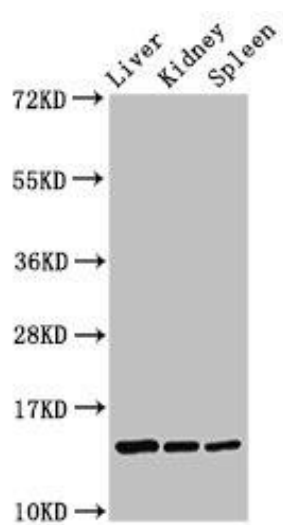
Recombinant Human Putative coiled-coil domain-containing protein 26 protein (1-109AA).

**Storage:**

Preservative: 0.03% Proclin 300. Constituents: 50% Glycerol, 0.01M PBS, pH 7.4

## Product Images

---



Western Blot. Positive WB detected in: Rat liver tissue, Rat kidney tissue, Rat spleen tissue. All lanes: CCDC26 antibody at 2.6 $\mu$ g/ml. Secondary. Goat polyclonal to rabbit IgG at 1/50000 dilution. Predicted band size: 14 kDa. Observed band size: 14 kDa.