

PACO53102

Product Information

Size:

50ug

Reactivity:

Human

Source:

Rabbit

Isotype:

IgG

Applications:

ELISA, IF

Recommended dilutions:

ELISA:1:2000-1:10000, IF:1:50-1:200

Protein Background:

Transcriptional activator which may act in mitogen-activated protein kinase signaling pathway.

Gene ID:

LBH

Uniprot

Q53QV2

Synonyms:

Protein LBH (hLBH), LBH

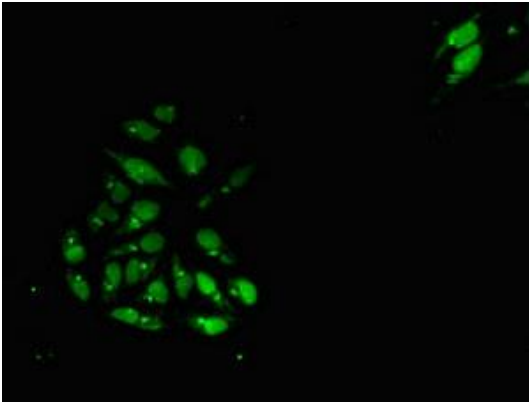
Immunogen:

Recombinant Human Protein LBH protein (1-105AA).

Storage:

Preservative: 0.03% Proclin 300. Constituents: 50% Glycerol, 0.01M PBS, pH 7.4

Product Images



Immunofluorescent analysis of HeLa cells using PACO53102 at dilution of 1:100 and Alexa Fluor 488-conjugated AffiniPure Goat Anti-Rabbit IgG(H+L).