

SLC25A1 Antibody



PACO53050

Product Information

Size:

50ug

Reactivity:

Human

Source:

Rabbit

Isotype:

IgG

Applications:

ELISA, IHC, IF

Recommended dilutions:

ELISA:1:2000-1:10000, IHC:1:20-1:200,
IF:1:50-1:200

Protein Background:

Involved in citrate-H(+)/malate exchange. Important for the bioenergetics of hepatic cells as it provides a carbon source for fatty acid, and sterol biosyntheses, and NAD(+) for the glycolytic pathway.

Gene ID:

SLC25A1

Uniprot

P53007

Synonyms:

Tricarboxylate transport protein, mitochondrial (Citrate transport protein) (CTP) (Solute carrier family 25 member 1) (Tricarboxylate carrier protein), SLC25A1, SLC20A3

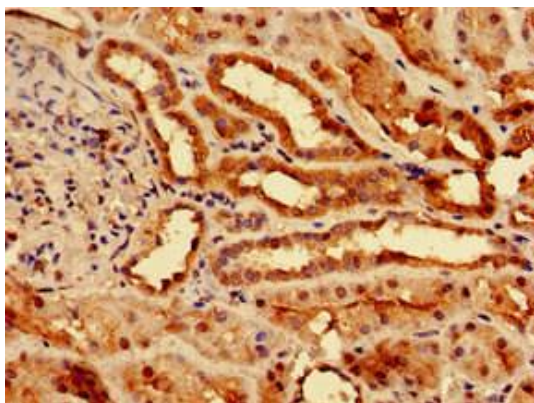
Immunogen:

Recombinant Human Tricarboxylate transport protein, mitochondrial protein (144-182AA).

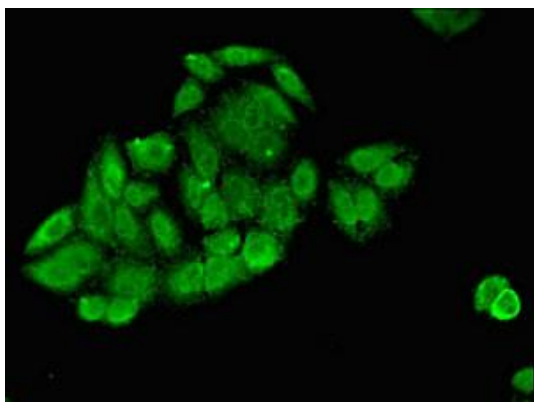
Storage:

Preservative: 0.03% Proclin 300. Constituents: 50% Glycerol, 0.01M PBS, pH 7.4

Product Images



Immunohistochemistry of paraffin-embedded human kidney tissue using PACO53050 at dilution of 1:100.



Immunofluorescent analysis of HepG2 cells using PACO53050 at dilution of 1:100 and Alexa Fluor 488-conjugated AffiniPure Goat Anti-Rabbit IgG(H+L).