

Product Information

Size:

50ug

Reactivity:

Human

Source:

Rabbit

Isotype:

IgG

Applications:

ELISA, IHC, IF

Recommended dilutions:

ELISA:1:2000-1:10000, IHC:1:20-1:200,
IF:1:50-1:200

Protein Background:

cytoplasm, cytosol, cytosolic small ribosomal subunit, nucleoplasm, small ribosomal subunit, poly(A) RNA binding, protein N-terminus binding, structural constituent of ribosome, endonucleolytic cleavage in ITS1 to separate SSU-rRNA from 5.8S rRNA and LSU-rRNA from tricistronic rRNA transcript (SSU-rRNA, 5.8S rRNA, LSU-rRNA), endonucleolytic cleavage to generate mature 3'-end of SSU-rRNA from (SSU-rRNA, 5.8S rRNA, LSU-rRNA).

Gene ID:

RPS21

Uniprot

Q8WVC2

Synonyms:

40S ribosomal protein S21 (Small ribosomal subunit protein eS21), RPS21

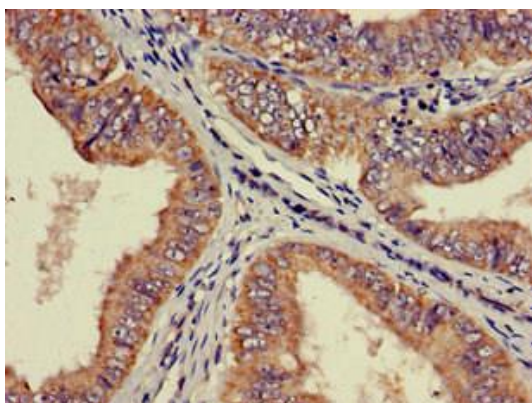
Immunogen:

Recombinant Human 40S ribosomal protein S21 protein (1-81AA).

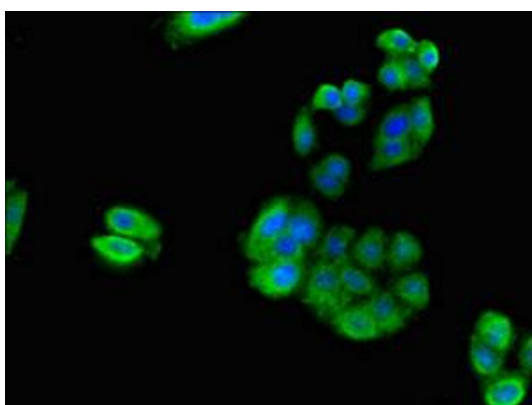
Storage:

Preservative: 0.03% Proclin 300. Constituents: 50% Glycerol, 0.01M PBS, pH 7.4

Product Images



Immunohistochemistry of paraffin-embedded human endometrial cancer using PACO53042 at dilution of 1:100.



Immunofluorescent analysis of HepG2 cells using PACO53042 at dilution of 1:100 and Alexa Fluor 488-conjugated AffiniPure Goat Anti-Rabbit IgG(H+L).