

RLBP1 Antibody



PACO53038

Product Information

Size:

50ug

Reactivity:

Human

Source:

Rabbit

Isotype:

IgG

Applications:

ELISA, IHC, IF

Recommended dilutions:

ELISA:1:2000-1:10000, IHC:1:20-1:200,
IF:1:50-1:200

Protein Background:

Soluble retinoid carrier essential the proper function of both rod and cone photoreceptors. Participates in the regeneration of active 11-cis-retinol and 11-cis-retinaldehyde, from the inactive 11-trans products of the rhodopsin photocycle and in the de novo synthesis of these retinoids from 11-trans metabolic precursors. The cycling of retinoids between photoreceptor and adjacent pigment epithelium cells is known as the 'visual cycle'.

Gene ID:

RLBP1

Uniprot

P12271

Synonyms:

Retinaldehyde-binding protein 1 (Cellular retinaldehyde-binding protein), RLBP1, CRALBP

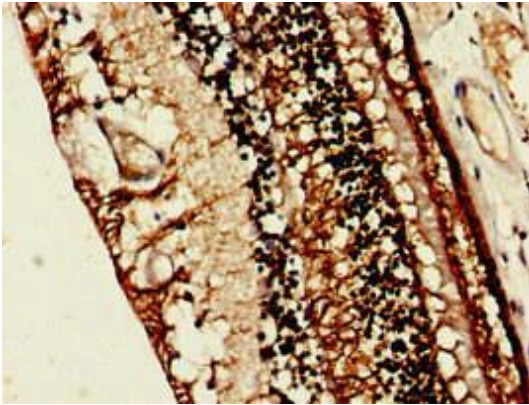
Immunogen:

Recombinant Human Retinaldehyde-binding protein 1 protein (10-91AA).

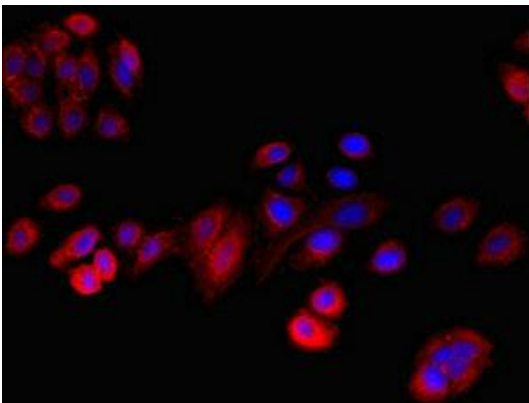
Storage:

Preservative: 0.03% Proclin 300. Constituents: 50% Glycerol, 0.01M PBS, pH 7.4

Product Images



Immunohistochemistry of paraffin-embedded human eye tissue using PACO53038 at dilution of 1:100.



Immunofluorescent analysis of HepG2 cells using PACO53038 at dilution of 1:100 and Cy3-conjugated Goat Anti-Rabbit IgG.